

# Procedural Coding Expert

The Ultimate Guide to CPT® Coding



**2010**

# Contents

<b>Preface</b> .....	<b>iii</b>	Pending FDA-approval List .....	31
Sources and Contributors .....	iii	<b>Coding Reference Information</b> .....	<b>32</b>
Anatomical Illustrators .....	iii	Root Words .....	32
<b>Introduction</b> .....	<b>iv</b>	Prefixes .....	33
HCPCS Level II Codes .....	iv	Suffixes .....	33
Locating a CPT Code .....	iv	Abbreviations .....	34
CPT Symbols .....	iv	Coding Terms Glossary .....	39
Add-on Codes .....	v	Physician Quality Reporting Initiative .....	50
Modifiers .....	v	List of Nerves with Added Specificity .....	53
Unlisted Codes .....	v	Anatomical Color Plates .....	55
Category II Codes .....	v	<b>Alphabetical Index</b> .....	<b>1</b>
Category III Codes .....	v	<b>Tabular List</b> .....	<b>1</b>
Using the Procedural Coding Expert .....	v	<i>Evaluation and Management Services</i> .....	<b>3</b>
<b>Procedural Coding Expert Conventions</b> .....	<b>1</b>	Evaluation and Management Services Documentation ..	3
Punctuation .....	1	1995 Federal Guidance .....	4
Text Formatting .....	1	1997 Federal Guidance .....	4
Symbols .....	1	Counseling .....	6
Additional Code Level Indicators .....	3	Time .....	6
Code Level Enhancements .....	3	Evaluation and Management Services .....	6
Modifier Rules .....	3	Office or Other Outpatient Services .....	6
<b>2010 CPT Code Changes</b> .....	<b>5</b>	Office/Outpatient Visits .....	6
Tabular List .....	5	<b>Hospital Observation Services</b> .....	<b>8</b>
Anesthesia Codes .....	5	Hospital Observation Discharge Services .....	8
Surgery Codes .....	5	Initial Observation Visits .....	8
Radiology Codes .....	8	Hospital Inpatient Services .....	9
Laboratory/Pathology Codes .....	10	Subsequent Hospital Care .....	10
Medicine Codes .....	11	Hospital Discharge Services .....	11
Evaluation and Management Codes .....	16	Consultation Visits .....	11
Category III Codes .....	17	Inpatient Consultation Visits .....	12
Category II Codes .....	19	Emergency Department Visits .....	13
<b>CPT Modifiers</b> .....	<b>23</b>	Critical Care .....	14
Modifiers and Coding Tips .....	23	Nursing Facility Visits .....	15
Genetic Testing Modifiers .....	28	Assisted Living Facility/Rest Home Visits .....	16
<b>CPT Code Summary Tables</b> .....	<b>30</b>	Assisted Living Facility/Rest Home Oversight Visits ..	18
Deleted Codes Crosswalk .....	30	Home Visits .....	18
Add-on Codes .....	31	Prolonged Physician Visits .....	20
Moderate/Conscious Sedation Codes .....	31	Case Management Visits .....	21
Unlisted Codes .....	31	Medical Team Conference Services .....	21
Modifier 51 Exempt Codes .....	31	Preventative Care Visits .....	22
Modifier 63 Exempt Codes .....	31	Physician Non-Face to Face Services .....	25
		Special E/M Visits .....	25
		Newborn Care .....	25
		Pediatric/Neonate Critical Care .....	26
		Other E/M Visits .....	26

**Anesthesia Services ..... 27**

Anesthesia Coding Guidance.....27

Anesthesia Services.....29

Head Anesthesia Procedures.....29

Neck Anesthesia Procedures .....30

Chest Wall, Thorax, Shoulder Anesthesia Procedures .30

Intrathorax Anesthesia Procedures .....31

Spine/Spinal Cord Anesthesia Procedures .....32

Abdominal Anesthesia Procedures .....33

Perineal Anesthesia Procedures .....35

Pelvic Anesthesia Procedure .....36

Upper Leg Anesthesia Procedures.....36

Knee/Knee Region Anesthesia Procedures.....37

Lower Leg/Ankle/Foot Anesthesia Procedures .....38

Shoulder/Axilla Anesthesia Procedures.....39

Upper Arm/Elbow Anesthesia Procedures .....39

Forearm/Wrist/Hand Anesthesia Procedures.....40

Radiological Anesthesia Procedures.....41

Burn Excision/Debridement Anesthesia Procedures .41

Obstetrical Anesthesia Procedures .....41

Other Anesthesia Procedures .....42

**Surgical Procedures ..... 43**

10021-19499 .....43

20000-29999 .....43

30000-32999 .....43

33010-37799 .....43

38100-38999 .....43

39000-39599 .....43

40490-49999 .....43

50010-53899 .....43

54000-58999 .....43

60000-60699 .....44

61000-64999 .....44

65091-68899 .....44

69000-69450 .....44

Surgical Procedures.....45

Fine Needle Aspiration.....45

Skin Procedures .....45

Breast Procedures .....79

Musculoskeletal Procedures.....86

Respiratory Procedures ..... 180

Cardiovascular Procedures ..... 195

Hemic/Lymphatic Procedures..... 241

Mediastinum/Diaphragm Procedures ..... 246

Digestive System Procedures..... 248

Urinary Procedures ..... 304

Male Genital Procedures ..... 328

Reproductive System Procedures ..... 338

Female Genital System..... 339

Maternity Care/Delivery Procedures ..... 355

Endocrine System Procedures..... 361

Nervous System Procedures..... 363

Eye/Ocular Procedures..... 397

Auditory System Procedures ..... 417

Surgical Operating Microscope..... 424

**Radiological Procedures ..... 425**

Radiological Procedures ..... 425

Diagnostic Radiology Procedures ..... 425

Diagnostic Ultrasound Procedures ..... 458

Radiological Guidance ..... 464

Mammographies ..... 465

Bone/Joint Studies..... 466

Radiation Oncology Services..... 467

Nuclear Medicine Procedures ..... 473

**Laboratory/Pathology Services ..... 488**

Organ/Disease Panel Studies..... 488

Clinical Pathology Consultations ..... 493

Urinalysis/Urine Tests ..... 493

Chemistry Testing ..... 494

Hematology/Coagulation Testing ..... 517

Immunological Testing..... 522

Tissue Type Testing ..... 530

Transfusion Testing ..... 531

Microbiology Testing ..... 533

Anatomical Pathology (Necropsy) ..... 545

Cytopathology Testing..... 545

Cytogenic Testing..... 549

Surgical Pathology Specimen Testing..... 550

Other Laboratory/Pathology Procedures ..... 556

Reproductive Medicine Procedures/Testing..... 557

**Medicine Procedures/Services..... 560**

Immune Globulin Administration ..... 561

Vaccine/Toxic Administration ..... 562

Vaccine/Toxoid Supply..... 562

Hydration/Injection/Infusion Services ..... 567

Psychiatry ..... 567

Dialysis Services/Procedures ..... 571

Gastroenterology Procedures ..... 574

Ophthalmology Services/Procedures..... 576

Otorhinolaryngological Services ..... 580

Cardiovascular Services/Procedures ..... 586

Vascular Diagnostic Services (Noninvasive) ..... 603

Pulmonary Services/Procedures..... 605

Allergy/Immunology Services/Procedures ..... 610

Endocrinology Services ..... 613

Neurology/Neuromuscular Services/Procedures ... 613

Medical Genetics/Genetic Counseling ..... 622

Central Nervous System Cognitive Assessment/  
Testing ..... 622

Chemotherapy Administration Services ..... 625

Photodynamic Therapy Procedures ..... 627

Dermatological Procedures ..... 628

Physical Medicine/Rehabilitation Therapy  
Services ..... 628

Medical Nutrition Therapy Services ..... 632

Acupuncture Procedures ..... 633

Osteopathic Manipulation ..... 633

Chiropractic Manipulation ..... 633

Patient Self-Management Education and Training . 634

Non-Face to Face Nonphysician Practitioner  
Services ..... 634

Special Services/Procedures/Reports ..... 635

Anesthesia Qualifying Circumstances ..... 636

Conscious Sedation..... 636

Other Medicine Services/Procedures ..... 637

Home Health Services/Procedures ..... 638

Medication Therapy Management. .... 639

**Category II Procedures..... 640**

Modifiers ..... 640

Composite/Combined Codes ..... 640

Patient Management Codes..... 641

Patient History Codes..... 641

Physical Examination Codes..... 644

Diagnostic/Screening Processes/Result Codes ..... 645

Therapeutic/Preventative/Other Interventional  
Codes ..... 650

Follow-up/Other Outcome Codes ..... 656

Patient Safety Codes..... 656

Structural Measurements ..... 657

**Category III Procedures ..... 658**

Remote Real-Time Interactive Video-Conference  
Critical Care Service ..... 667

Other Intraocular/Extraocular ..... 667

**Type of Service (TOS) Indicators ..... 672**

**Suture** — *continued*

trachea  
 stoma, 31820-31825  
 wound, 31800-31805  
 ulcer, 44604-44605  
 ureter, 50900  
 urethra  
 stoma, 53520  
 to bladder, 51840-51841  
 wound, 53502-53515  
 uterus  
 rupture, 58520, 59350  
 suspension, 58400-58410  
 vagina  
 cystocele, 57240, 57260  
 enterocele, 57265  
 rectocele, 57250-57260  
 suspension, 57280, 57283  
 wound, 57200-57210  
 vas deferens, 55400  
 vein, 37700-37760, 37780-37785  
 femoral, 37650  
 iliac, 37660  
 jugular, internal, 37565  
 vena cava, 37620

**Swallowing**, 3142F  
 evaluation, 92610-92613,  
 92616-92617  
 imaging, 74230  
 treatment, 92526

**Swanson procedure**, 28309

**Sweat**

collection, 89230  
 gland  
 axillary, 1150-11451  
 inguinal, 11462-11463  
 umbilical, 11470-11471  
 test, 82435

**Swenson procedure**, 45120

**Syme procedure**, 27888

**Sympathectomy**

artery  
 digital, 64820  
 radial, 64821  
 superficial palmar arch,  
 64823  
 ulnar,  
 cervical, 64822  
 cervicothoracic, 64802  
 lumbar, 64818  
 presacral, 58410  
 thoracic, 32664  
 thoracolumbar, 64809

**Sympathetic nerve**

excision, 64802-64818  
 injection, 64508, 64520-64530

**Sympathins**, 80424, 82382-82384

**Symphysiotomy**, 50540

**Symphysis**, 27282

**Syncytial virus**, 86756  
 antigen, 87280, 87420, 87807

**Syndactyly**, 26560-26562

**Syndesmotomy**

coracoacromial, 23415  
 transverse carpal, 29848

**Syngesterone**, 84144

**Synostosis**, 61557-61559

**Synovectomy**

elbow, 24102  
 excision  
 carpometacarpal joint, 26130  
 finger joint, 26135-26140  
 hip joint, 27054  
 interphalangeal joint, 26140  
 knee joint, 27334-27335  
 metacarpophalangeal joint,  
 26135  
 palm, 25105, 25118-25119  
 incision  
 glenohumeral joint, 23105  
 sternoclavicular joint, 23106  
 wrist, 25105, 25115-25116,  
 25118-25119

**Synovium**

biopsy  
 carpometacarpal joint, 26100  
 interphalangeal joint, 26110  
 knee joint, 27330  
 metacarpophalangeal joint,  
 26105  
 excision  
 carpometacarpal joint, 26130  
 finger joint, 26135-26140  
 hip joint, 27054  
 interphalangeal joint, 26140  
 knee joint, 27334-27335

**Syphilis**

ab, 86781  
 test, 86592-86593

**Syrinx**, 62268

**T-3**, 84480

**T-4**, 86360-86361

**T-7 index**

thyroxine, 84436  
 triiodothyronine, 844-84482

**T-8**, 86360

**T-Phyl**, 80198

**Taarnhoj procedure**, 61450

**Tachycardia**, 93609

**Tacrolimus**, 80197

**Tag**, 11200-11201

**Tail bone (coccyx)**

excision, 27080  
 fracture treatment, 27200,  
 27202

**Takeuchi procedure**, 33505

**Talectomy**, 28130

**Talotarsal joint**, 28570-28575,  
 28585  
 fixation, 28576

**Talus**

arthrodesis  
 pantalar, 28705  
 subtalar, 28725  
 triple, 28715  
 arthroscopy, 29891, 29892  
 craterization, 28120  
 diaphysectomy, 28120  
 excision, 28120, 28130  
 cyst, 28100-28103  
 tumor, 26747, 28100-28103  
 fracture treatment  
 open, 28445  
 percutaneous, 28436  
 with manipulation, 28435,  
 28436  
 without manipulation, 28430  
 repair  
 osteochondritis dissecans,  
 29892  
 osteotomy, 28302  
 saucerization, 28120

**Tamponade**, 43460

**Tap**

cisternal, 61050-61055  
 spinal, 62272  
 lumbar, 62270

**Tarsal**

fracture, 28456  
 joint  
 arthrodesis, 28730-28740  
 dislocation, 28540-28545,  
 28555  
 fixation, 28545-28546  
 excision, 28122  
 cyst, 28104-28107  
 tumor, 28104-28107,  
 28171  
 fracture, 28450-28465  
 repair, 28320  
 osteotomy, 28304-28305  
 strip procedure, 67917-67924  
 tunnel release, 28035  
 wedge, 67916, 67923

**Tarsometatarsal joint**

arthrodesis, 28730-28740  
 arthroscopy, 28020, 28050  
 dislocation, 28600-28605,  
 28615  
 fixation, 28606

**Tarsometatarsal joint** — *continued*

removal, 28020  
 synovial, 28050, 28070

**Tarsorrhaphy**, 67875  
 median, 67880  
 severing, 67710, 67882

**Tattoo**

cornea, 65600  
 skin, 11920-11922

**TB test**

antigen response, 86480  
 cell mediated measurement,  
 86480  
 skin test, 86580

**Teeth**

x-ray, 70300-70320

**Telanglectasia**, 88248

injection, 36468

**Telephone**

electrocardiogram (ECG)  
 transmission, 93012  
 evaluation and management  
 services, 99441-99443  
 video conference, 0188T-  
 0189T  
 pacemaker analysis, 93293

**Teletotherapy**

dose plan, 77305-77321

**Temperature studies**, 93740

**Temporal**

artery, 37609  
 bone  
 excision, 69535  
 hearing device, 69710-69711  
 tumor, 69970  
 petrous, 69530

**Tempomandibular joint**

arthrocentesis, 20605  
 arthrography, 70328-70332  
 injection, 21116  
 arthroplasty, 21240-21243  
 arthroscopy  
 diagnostic, 29800  
 surgical, 29804  
 arthrotomy, 21010  
 condylectomy, 21050  
 coronoidectomy, 21070  
 dislocation treatment  
 closed, 21480, 21485  
 open, 21490  
 injection, 21116  
 manipulation, 21073, 97140  
 magnetic resonance imaging  
 (MRI), 70336  
 meniscectomy, 21060  
 prosthesis, 21243  
 reconstruction, 21240-21243  
 x-ray, 70328-70332

**Tenago procedure**, 53431

**Tendon**

excision  
 finger, 26180  
 palm, 26170  
 graft  
 harvesting, 20924  
 insertion  
 biceps, 24342  
 origin, 20551  
 lengthening  
 ankle, 27685, 27686  
 arm, 24305, 25280  
 elbow, 24305  
 finger, 26476, 26478  
 forearm, 25280  
 hand, 26476, 26478  
 leg, 27393-27395, 27685-  
 27686  
 toe, 28240  
 wrist, 25280  
 pulley, 26500-26502  
 release  
 arm, 24332, 25295  
 wrist, 25295  
 repair  
 forearm, 25260-25274  
 wrist, 25260-25274

**Tendon** — *continued*

sheath  
 excision  
 lesion, 26160  
 foot, 28086-28088  
 wrist, 25115-25116  
 incision  
 finger, 26055  
 wrist, 25000-25001  
 incision and drainage  
 finger, 26020  
 palm, 26020  
 removal  
 foreign body, 20520,  
 20525  
 repair  
 arm, 25275  
 wrist, 25275  
 shortening  
 ankle, 27685-27686  
 finger, 26477-26479  
 hand, 26477, 26479  
 leg, 27685-27686  
 suture  
 foot, 28200-28210  
 knee, 27380-27381  
 transfer  
 arm, 24301, 25310, 25312,  
 25316  
 elbow, 24301  
 finger, 26497-26498  
 hand, 26480-26489  
 leg, 27400, 27690-27692  
 pelvis, 27098  
 thumb, 26400, 26492,  
 26510  
 wrist, 25310, 25312, 25316,  
 25320  
 transplant  
 leg, 27396-27397

**Tennis elbow**, 24357-24359

**Tendinitis**

bicep tendon  
 at elbow, 24340  
 at shoulder, 23430  
 finger, 26471, 26474  
 wrist, 25300-25301

**Tenolysis**

ankle, 27680-27681  
 arm, 24332, 25295  
 finger  
 extensor, 26445, 26449  
 foot, 28220-28226  
 hand  
 extensor, 26445, 26449  
 flexor, 26440, 26442  
 leg, lower, 27680-27681  
 wrist, 25295

**Tenotomy**, 23405-23406

**Tenon's capsule**, 67515

**Tenosynovectomy**, 26145, 27626

**Tenotomy**

achilles tendon, 27605-27606  
 anesthesia, 01712  
 ankle, 27605-27606  
 arm, 24310, 25290  
 finger, 26060, 26455, 26460  
 foot, 28230, 28234  
 hip  
 abductor, 27006  
 adductor, 27000-27003  
 iliopsoas, 27005  
 leg, 27306-27307, 27390-27392  
 toe, 28010, 28232, 28234, 28240

**TENS**, 64550, 97014, 97032

**Tensilon test**, 95857

**Tentorium cerebelli**, 61440

**Terman-Merrill test**, 96101-96103

**Test**

acid reflux, 78262, 91034-91038  
 adrenal gland, 95922  
 allergy  
 food, 95075  
 inhalation, 95065-95075  
 intracutaneous, 95015-95028  
 patch, 95044-95052  
 percutaneous, 95004-95010  
 photo, 95052-95056  
 ophthalmic, 95060

**Test — continued**

amines, 82120  
 Bender-Getsalt, 96101-96103  
 Bernstein, 91030  
 Binet, 96101-96103  
 blood  
   acetaldehyde, 82000  
   ascorbic acid, 82180  
   bone marrow, 3155F, 88237  
   catecholamines, 83283  
   clot assessment, 85396  
   chloride, 82435  
   cholesterol, 82465  
   complete, 85025-85027  
   creatinine, 82565  
 culture  
   bacterial, 87040  
   fungal, 87103  
 erythrocyte, 85032  
 gases  
   CO2, 82803  
   HCO3, 82803  
   O2 saturation, 82805-82810  
   pCO2, 82803  
   pH, 82800-82803  
   pO2, 82803  
 glucose, 82947-82948, 82962  
 helicobacter pylori, 83009  
 hematocrit, 85014  
 hemoglobin, 85018  
 iron  
   stain, 85536  
   stores, 3160F  
 Kt/V, 3082F-3084F  
 leukocyte, 85032, 84048  
   myeloperoxidase (MPO), 83876  
 lipoprotein, 3048F-3050F, 83700-83704  
 lysis time, 85175  
 microhematocrit, 84013  
 nuclear medicine  
   plasma volume, 78110-78111  
   platelet survival, 78190-78191  
   red cell volume, 78120-78121  
   whole blood volume, 78122  
 occult, 82270-82274  
 osmolality, 83930  
 panels  
   electrolyte, 80051  
   general health, 80050  
   hepatic function, 80076  
   hepatitis, 80074  
   lipid, 3011F, 3278F, 80061  
   metabolic, 80047-80048, 80053  
   obstetric, 80055  
   renal, 80069  
 phenylalanine (PKU), 84030  
 platelet, 85032, 85049  
 protein  
   western blot, 84181-84182  
 red blood cell (RBC) 85041  
 reticulocyte, 85044-85046  
 smear, 85060, 88140  
 thromboplastin time, 85730  
 tissue, 88237  
 uric acid, 84550  
 volume determination, 78122  
 WBC, 85004-85009  
 western blot  
   human immunodeficiency virus (HIV), 86689  
   protein, 84181-84182  
   tissue analysis, 88371-88372  
 xylose absorption, 84620  
 breath  
   alcohol, 82075  
   heart transplant rejection detection, 0085T  
   helicobacter pylori, 78267-78268, 83013-83014

**Test — continued**

breath — continued  
   hydrogen, 91065  
   caffeine halothane contracture (CHCT), 89049  
   caloric vestibular, 92533  
   candida, 86485  
   cholesterol, 80061, 82465, 83718-83721  
   compatability, 86920, 86923  
   Coombs, 86880, 86885-86886  
   D-xylose absorption, 84620  
   dark room, 92140  
   defibrillator, 93640-93642  
   developmental, 96110-96111  
   ear function, 92506, 92511-92520, 92531-92597  
   ergonovine provocation, 93024  
   esophagus acid, 91012, 91030  
   Farnsworth-Munsell color, 92283  
   Fern, 87210, 89060  
   fertility, 89300-89322, 89329-89331  
 fetal  
   blood  
     hemoglobin, 83030-83033, 85460-85461  
     scalp, 59030  
   contraction stress, 59020  
   echocardiography, 76825-76828  
   fibronectin, 82731  
   lung maturity, 83661-83664  
   non-stress, 59025, 76818  
   profile, 76818-76819  
   ultrasound, 76801-76817  
   velocimetry, 76820-76821  
 function  
   neurological  
     aphasia, 96105  
     cognitive, 96116  
     developmental, 96110-96111  
     neuropsychological, 96118-96120  
   pulmonary  
     capacity, 94200-94240  
     continuous pressure, 94660-94662  
     determination, 94350-94370, 95012  
   gas  
     analysis, 0064T, 94680-94690, 94770  
     collection, 94250  
     diffusion, 94720-94725  
     volume, 94260, 94750  
   high altitude simulation test (HAST), 94452-94453  
   inhalation, 94640-94645, 94664  
   manipulation, 94667-94668  
   perfusion, 78596  
   recording, 94772-94777  
   response, 94400-94450  
   saturation, 82820, 94760-94762  
   spirometry, 94010-94070  
   stress, 94620-94621  
   surfactant, 94610  
   ventilation, 94002-94005  
   volume, 94375  
   nasal, 92512  
 GERD, 91034-91038  
 glass, 81020  
 glucagon tolerance, 82946  
 gonadotropin, 84702-84704  
 Goodenough Harris drawing test, 96101-96103  
 guaiac, 82270-82272  
 Gunning-Lieben, 82009-82010  
 Guthrie, 84030  
 Hamster penetration, 89329  
 hemagglutination inhibition, 86280

**Test — continued**

high altitude simulation (HAST), 94452-94453  
 histoplasma, 86510  
 Holten, 82575  
 human immunodeficiency, 86689  
 hue, 92283  
 Huhner, 89300  
 impedance, 92567  
 infection, 86403-86406  
 ingestion challenge, 95075  
 inhalation provocation, 95070-95071  
 inhibition, 86280  
 intelligence, 96101-96103  
 iodine, 89225  
 Kleihauer Betke, 85460  
 Kuhlmann, 96101-96103  
 lactase deficiency, 91065  
 lactose tolerance, 82951-85953  
 larynx, 92614-92617  
 Lee and White, 85345  
 Leveen shunt, 78291  
 Mantoux, 86580  
 Metabisulfite, 85660  
 monitoring, 4189F-4191F  
 monospot, 86308  
 Mosenthal, 81002  
 mucous membrane, 95060-95065  
 multiple sleep latency (MSLT), 95805  
 muscle  
   eye, 92260-92265  
   manual, 95831-95834  
 Myasthenia gravis, 95857  
 Nagel, 92283  
 nerve, 88362  
 neurofunctional, 96020  
 neuromuscular junction, 95937  
 neurophysiologic  
   autonomic, 95921-95923  
   intraoperative, 95920  
   neuropsychology, 96118-96125  
   neutralization, 86382  
   nitroblue tetrazolium, 83684  
   nocturnal penile, 54250  
 Nystagmus, 92531-92532, 92534, 92541-92542, 92544  
 ophthalmic membrane, 95060  
 optokinetic nystagmus, 92534, 92544  
 ovulation, 84830  
 oxytocin stress, 59020  
 pacemaker  
   antitachycardia, 93724  
   chamber  
   dual, 93641-93642, 93745  
   single, 93745  
 pain, 1125F-1126F, 1130F-1137F, 2040F, 3330F-3331F  
 pancreozymin-secretin, 82938  
 paternity, 86910-86911  
 penetration, 89330  
 penile, 54250  
 pentagastrin, 91052  
 performance  
   cognitive, 96125  
   physical, 97750  
   psychological, 96101-96103  
 personality, 96101-96103  
 photosensitivity, 95056  
 physical performance, 97750  
 polyuria, 89235  
 positional nystagmus, 92532-92542  
 pregnancy, 84702-84704  
 projective, 96101-96103  
 psychological, 96101-96103, 96125  
 quantitative sensory  
   cooling, 0108T  
   heat-pain, 0109T  
   other, 0110T  
   touch pressure, 0106T  
   vibration, 0107T  
 quick, 85610-85611

**Test — continued**

radioimmunosorbent, 82784-82787  
 rapid  
   infection, 86308, 86403-86406  
   plasma reagent, 86592-86593  
 Rapoport, 52005  
 reflex, 95933-95934  
 Reinsch, 83015  
 reptilase, 85635  
 Ropes, 83872  
 Rorschach, 96101  
 Sahli, 91052-91055  
 Schilling, 78270  
 Schlicter, 87197  
 serologic, 86592-86593  
 serotonin, 84260  
 six minute walk, 94620  
 skin  
   immunologic  
   candida, 86485  
   coccidiomycosis, 86490  
   histoplasmosis, 86510  
   other, 86486  
   tuberculosis, 17999  
 small increment sensitivity index (SISI), 82564  
 somatosensory, 95925-95927  
 specific gravity, 84315  
 Stenger, 92565, 92577  
 stress, 78473, 93015-93018, 93024  
 supression, 80400-80440  
 sweat, 82435  
 syphilis, 86592-86593  
 tenson, 95857  
 Terman Merrill, 96101-96103  
 tissue factor, 85347  
 tolerance  
   glucagon, 82946  
   glucose, 82951-82952  
     with tobutamide, 82953  
   heparine-protamine, 85530  
   insulin, 80434-80435  
   maltose, 82951-82952  
   tolbultamide, 82953  
 torsion swing, 92546  
 tracking, 92545  
 tuberculosis, 86480, 86580  
 urea, 78267-78268  
 urodynamic  
   bladder capacity, 51798  
   cystometrogram, 51725-51726  
   electromyographic study, 51785  
   residual urine, 51798  
   stimulus evoked response, 51792  
   urethra pressure profile, 51772  
   uroflowmetry, 51736-51741  
   voiding pressure studies  
   bladder, 51795  
   intra-abdominal, 51797  
   rectal, 51797  
 VanDen Bergh, 82247-82248  
 villus sampling, 88235, 88267  
 vitamin test  
   A, 84590  
   B, 82607-82608, 84207, 84252, 84425  
     absorption study, 78270-78272  
   holotranscobalamin, 0103T  
   C, 82180  
   D, 82306-82307, 82652  
   E, 84446  
   K, 84597  
 WADA, 95958  
 wakefulness, 95805  
 water test, 85555-85557  
 Wintrobe, 85651-85652  
 xylose absorption, 84620  
**Testis**, 00920-00938  
 biopsy, 54500-54505  
 cryopreservation, 89335

**25490 Prophylactic treatment (nailing, pinning, plating or wiring) with or without methylmethacrylate; radius** A2 I

RVU		Global Days		Modifiers			
Non-Fac Total	Fac Total	50	51	62	80		
17.59	17.59	090	1	2	0	2	

**25491 Prophylactic treatment (nailing, pinning, plating or wiring) with or without methylmethacrylate; ulna** A2 I

RVU		Global Days		Modifiers			
Non-Fac Total	Fac Total	50	51	62	80		
18.63	18.63	090	1	2	0	2	

**25492 Prophylactic treatment (nailing, pinning, plating or wiring) with or without methylmethacrylate; radius AND ulna** A2 I

RVU		Global Days		Modifiers			
Non-Fac Total	Fac Total	50	51	62	80		
23.04	23.04	090	1	2	0	2	

**Forearm/Wrist Fracture Dislocation Procedures**

**Coding Guidance**

Open treatment of fractures or dislocations includes the application of casts, straps, or splints. Do not report their application separately. The physician who treated the fracture or dislocation with an initial cast, splint, or strap and assumed the follow-up care cannot report the casting/splinting/strapping codes, as they are inclusive in the fracture/dislocation care codes. The physician who treated the fracture or dislocation with a cast, splint, or strap as an initial service minus any other definitive care and expects to do only the initial casting, may report an E/M service code (if significant and separately identifiable), the casting/strapping/splinting application code, and a supply code (Q4001-Q4051) for the cast/splint/strap used. According to OPPS rules, a hospital that treats the fracture or dislocation with a cast, splint, or strap as an initial service minus any other definitive care, reports the casting/strapping/splinting application code, while payment for the supply of the cast/splint/strap is included. When closed fracture reduction is followed by open reduction for the same patient encounter, only the open reduction service can be reported. Use codes 11010-11012 for debridement of tissue with open fractures or dislocations. See also external application applied along with internal fixation – 20690 with most appropriate internal fixation code.

**25500 Closed treatment of radial shaft fracture; without manipulation** P2 I

RVU		Global Days		Modifiers			
Non-Fac Total	Fac Total	50	51	62	80		
6.15	5.72	090	1	2	0	1	

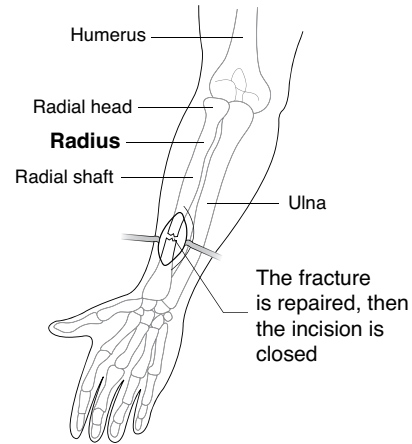
**25505 Closed treatment of radial shaft fracture; with manipulation** A2 I

RVU		Global Days		Modifiers			
Non-Fac Total	Fac Total	50	51	62	80		
12.06	11.23	090	1	2	0	1	

**25515 Open treatment of radial shaft fracture, includes internal fixation, when performed** A2 I

RVU		Global Days		Modifiers			
Non-Fac Total	Fac Total	50	51	62	80		
16.88	16.88	090	1	2	1	2	

**Open treatment of radial shaft fracture**



**25520 Closed treatment of radial shaft fracture and closed treatment of dislocation of distal radioulnar joint (Galeazzi fracture/dislocation)** A2 I

RVU		Global Days		Modifiers			
Non-Fac Total	Fac Total	50	51	62	80		
13.26	12.71	090	1	2	0	1	

**25525 Open treatment of radial shaft fracture, includes internal fixation, when performed, and closed treatment of distal radioulnar joint dislocation (Galeazzi fracture/ dislocation), includes percutaneous skeletal fixation, when performed** A2 I

RVU		Global Days		Modifiers			
Non-Fac Total	Fac Total	50	51	62	80		
20.13	20.13	090	1	2	2	2	

**25526 Open treatment of radial shaft fracture, includes internal fixation, when performed, and open treatment of distal radioulnar joint dislocation (Galeazzi fracture/ dislocation), includes internal fixation, when performed, includes repair of triangular fibrocartilage complex** A2 I

RVU		Global Days		Modifiers			
Non-Fac Total	Fac Total	50	51	62	80		
24.17	24.17	090	1	2	2	2	

**25530 Closed treatment of ulnar shaft fracture; without manipulation** P2 I

RVU		Global Days		Modifiers			
Non-Fac Total	Fac Total	50	51	62	80		
5.95	5.46	090	1	2	0	1	

AMA: Apr 2002:14

**25535 Closed treatment of ulnar shaft fracture; with manipulation** A2 I

RVU		Global Days		Modifiers			
Non-Fac Total	Fac Total	50	51	62	80		
11.76	11.04	090	1	2	0	1	

**25545 Open treatment of ulnar shaft fracture, includes internal fixation, when performed** A2 I

RVU		Global Days		Modifiers			
Non-Fac Total	Fac Total	50	51	62	80		
15.68	15.68	090	1	2	1	2	

AMA: Fall 1993:23, Oct 1999:5

**25560** Closed treatment of radial and ulnar shaft fractures; without manipulation P2 I

RVU		Global Days				Modifiers			
Non-Fac Total	Fac Total	50	51	62	80				
6.22	5.72	090	1	2	0	1			

**25565** Closed treatment of radial and ulnar shaft fractures; with manipulation A2 I

RVU		Global Days				Modifiers			
Non-Fac Total	Fac Total	50	51	62	80				
12.61	11.66	090	1	2	0	1			

**25574** Open treatment of radial AND ulnar shaft fractures, with internal fixation, when performed; of radius OR ulna A2 I

RVU		Global Days				Modifiers			
Non-Fac Total	Fac Total	50	51	62	80				
16.57	16.57	090	1	2	2	2			

AMA: Fall 1993:23, Oct 1999:5

**25575** Open treatment of radial AND ulnar shaft fractures, with internal fixation, when performed; of radius AND ulna A2 I

RVU		Global Days				Modifiers			
Non-Fac Total	Fac Total	50	51	62	80				
22.54	22.54	090	1	2	1	2			

**25600** Closed treatment of distal radial fracture (eg, Colles or Smith type) or epiphyseal separation, includes closed treatment of fracture of ulnar styloid, when performed; without manipulation P2 I

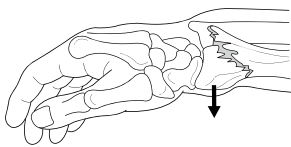
*Do not code closed treatment of ulnar styloid fracture – 25650.*

RVU		Global Days				Modifiers			
Non-Fac Total	Fac Total	50	51	62	80				
6.78	6.28	090	1	2	0	1			

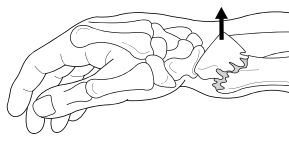
AMA: Oct 2007:7

### Closed Treatment of Distal Radial Fracture/Epiphyseal Separation

**Smith's fracture**  
Flexion fracture of the radius



**Colles' fracture**  
Extension fracture of the radius



Manipulation may be required to reduce the fracture, when performed use code 25605

A cast or splint is then applied

**25605** Closed treatment of distal radial fracture (eg, Colles or Smith type) or epiphyseal separation, includes closed treatment of fracture of ulnar styloid, when performed; with manipulation A2 I

*Do not code closed treatment of ulnar styloid fracture – 25650.*

RVU		Global Days				Modifiers			
Non-Fac Total	Fac Total	50	51	62	80				
14.92	14.22	090	1	2	0	1			

AMA: Oct 2007:7

**25606** Percutaneous skeletal fixation of distal radial fracture or epiphyseal separation A2 I

*Do not code closed treatment of ulnar styloid fracture – 25650.*

*See also percutaneous fixation of ulnar styloid fracture – 25651.*

*See also open treatment of ulnar styloid fracture – 25652.*

RVU		Global Days				Modifiers			
Non-Fac Total	Fac Total	50	51	62	80				
16.19	16.19	090	1	2	0	1			

**25607** Open treatment of distal radial extra-articular fracture or epiphyseal separation, with internal fixation A2 I

*Do not code closed treatment of ulnar styloid fracture – 25650.*

RVU		Global Days				Modifiers			
Non-Fac Total	Fac Total	50	51	62	80				
18.08	18.08	090	1	2	0	2			

AMA: Oct 2007:7

**25608** Open treatment of distal radial intra-articular fracture or epiphyseal separation; with internal fixation of 2 fragments A2 I

*Do not code 25609 or closed treatment of ulnar styloid fracture – 25650.*

*See also percutaneous fixation of ulnar styloid fracture – 25651.*

*See also open treatment of ulnar styloid fracture – 25652.*

RVU		Global Days				Modifiers			
Non-Fac Total	Fac Total	50	51	62	80				
20.72	20.72	090	1	2	0	2			

AMA: Oct 2007:7

**25609** Open treatment of distal radial intra-articular fracture or epiphyseal separation; with internal fixation of 3 or more fragments A2 I

*Do not code 25608 or closed treatment of ulnar styloid fracture – 25650.*

RVU		Global Days				Modifiers			
Non-Fac Total	Fac Total	50	51	62	80				
26.46	26.46	090	1	2	0	2			

AMA: Oct 2007:7

**25622** Closed treatment of carpal scaphoid (navicular) fracture; without manipulation P2 I

RVU		Global Days				Modifiers			
Non-Fac Total	Fac Total	50	51	62	80				
6.95	6.42	090	1	2	0	1			

**25624** Closed treatment of carpal scaphoid (navicular) fracture; with manipulation A2 I

RVU		Global Days				Modifiers			
Non-Fac Total	Fac Total	50	51	62	80				
11.03	10.2	090	1	2	0	0			

**67113** Repair of complex retinal detachment (eg, proliferative vitreoretinopathy, stage C-1 or greater, diabetic traction retinal detachment, retinopathy of prematurity, retinal tear of greater than 90 degrees), with vitrectomy and membrane peeling, may include air, gas, or silicone oil tamponade, cryotherapy, endolaser photocoagulation, drainage of subretinal fluid, scleral buckling, and/or removal of lens **G2 I**

**STOP** Do not code 69990.

**GO** Pars plana vitrectomy (not retinal detachment) – 67036-67043.

RVU		Global Days				Modifiers			
Non-Fac Total	Fac Total	50	51	62	80	50	51	62	80
40.6	40.6	090	1	2	1	2			

Pub 100-3, 1, 80.11; 100-3, 1, 140.1

**67115** Release of encircling material (posterior segment) **A2 I**

**STOP** Do not code 69990.

RVU		Global Days				Modifiers			
Non-Fac Total	Fac Total	50	51	62	80	50	51	62	80
11.29	11.29	090	1	2	0	1			

**67120** Removal of implanted material, posterior segment; extraocular **A2 I**

**STOP** Do not code 69990.

**GO** Anterior segment removal – 65920.

**GO** Foreign body removal – 65260 or 65265.

RVU		Global Days				Modifiers			
Non-Fac Total	Fac Total	50	51	62	80	50	51	62	80
14.73	12.69	090	1	2	1	1			

**67121** Removal of implanted material, posterior segment; intraocular **A2 I**

**STOP** Do not code 69990.

**GO** Anterior segment removal – 65920.

**GO** Foreign body removal – 65260 or 65265.

RVU		Global Days				Modifiers			
Non-Fac Total	Fac Total	50	51	62	80	50	51	62	80
20.85	20.85	090	1	2	1	2			

AMA: Nov 1997:23, Nov 1998:19

**Retinal Detachment Prophylaxis**

**67141** Prophylaxis of retinal detachment (eg, retinal break, lattice degeneration) without drainage, one or more sessions; cryotherapy, diathermy **A2 I**

**STOP** Do not code 69990.

RVU		Global Days				Modifiers			
Non-Fac Total	Fac Total	50	51	62	80	50	51	62	80
11.83	11.08	090	1	2	0	1			

AMA: Mar 1998:7

**67145** Prophylaxis of retinal detachment (eg, retinal break, lattice degeneration) without drainage, one or more sessions; photocoagulation (laser or xenon arc) **P3 I**

**STOP** Do not code 69990.

RVU		Global Days				Modifiers			
Non-Fac Total	Fac Total	50	51	62	80	50	51	62	80
11.95	11.33	090	1	2	0	1			

AMA: Fall 1992:4, Mar 1998:7

**Retina/Choroid Destruction**

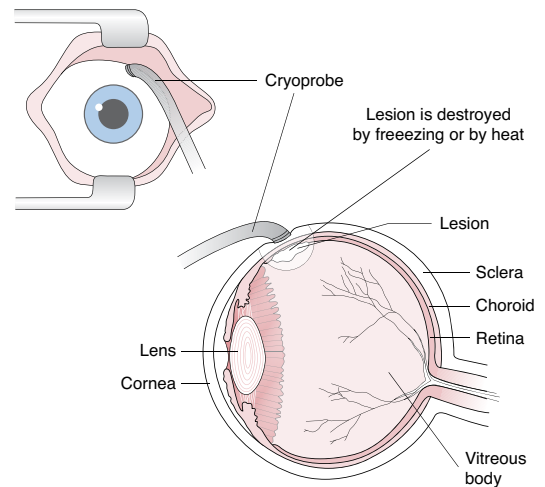
**67208** Destruction of localized lesion of retina (eg, macular edema, tumors), one or more sessions; cryotherapy, diathermy **P3 I**

**STOP** Do not code 69990.

RVU		Global Days				Modifiers			
Non-Fac Total	Fac Total	50	51	62	80	50	51	62	80
13.7	13.26	090	1	2	0	1			

AMA: Mar 1998:7, Nov 1998:19

**Destruction of Lesion of Retina by Cryotherapy or Diathermy**



**67210** Destruction of localized lesion of retina (eg, macular edema, tumors), one or more sessions; photocoagulation **P2 I**

**STOP** Do not code 69990.

RVU		Global Days				Modifiers			
Non-Fac Total	Fac Total	50	51	62	80	50	51	62	80
15.99	15.52	090	1	2	0	1			

AMA: Mar 1998:7, Nov 1998:19

**67218** Destruction of localized lesion of retina (eg, macular edema, tumors), one or more sessions; radiation by implantation of source (includes removal of source) **A2 I**

**STOP** Do not code 69990.

RVU		Global Days				Modifiers			
Non-Fac Total	Fac Total	50	51	62	80	50	51	62	80
32.42	32.42	090	1	2	0	1			

AMA: Mar 1998:7

**67220** Destruction of localized lesion of choroid (eg, choroidal neovascularization); photocoagulation (eg, laser), one or more sessions **P2 I**

**STOP** Do not code 69990.

**GO** Destruction of macular drusen – 0017T.

**GO** Transpupillary thermotherapy – 0016T.

RVU		Global Days				Modifiers			
Non-Fac Total	Fac Total	50	51	62	80	50	51	62	80
24.49	23.45	090	1	2	0	1			

AMA: Nov 1998:19, Nov 1999:39, Feb 2001:8

**67221** Destruction of localized lesion of choroid (eg, choroidal neovascularization); photodynamic therapy (includes intravenous infusion) **P3 I**

**GO** Add second eye – 67225.  
**NO** Do not code 69990.

RVU		Global Days				Modifiers			
Non-Fac Total	Fac Total	50	51	62	80	50	51	62	80
6.66	5.14	000	0	2	0	1			

**AMA:** Feb 2001:8, Sep 2001:10  
**Pub** 100-3, 1, 80.2-80.3.1

**+ 67225** Destruction of localized lesion of choroid (eg, choroidal neovascularization); photodynamic therapy, second eye, at single session (List separately in addition to code for primary eye treatment) **P3 I**

**GO** Code with 67221.  
**NO** Do not code 69990.

RVU		Global Days				Modifiers			
Non-Fac Total	Fac Total	50	51	62	80	50	51	62	80
.71	.67	ZZZ	0	0	0	1			

**AMA:** Jun 2002:10

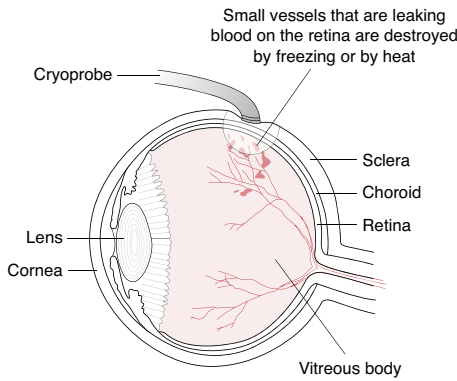
**67227** Destruction of extensive or progressive retinopathy (eg, diabetic retinopathy), one or more sessions, cryotherapy, diathermy **A2 I**

**NO** Do not code 69990.

RVU		Global Days				Modifiers			
Non-Fac Total	Fac Total	50	51	62	80	50	51	62	80
13.91	13.08	090	1	2	0	1			

**AMA:** Mar 1998:7

**Destruction of Extensive or Progressive Retinopathy by Cryotherapy or Diathermy**



**67228** Treatment of extensive or progressive retinopathy, one or more sessions; (eg, diabetic retinopathy), photocoagulation **P2 I**

**NO** Do not code 69990.

**CTI** Code 67228 is a unilateral procedure, but if it is performed on both sides of the body, append modifier 50 with the code. Individual payers may prefer 67228 coded twice with modifier 50 appended the second time.

RVU		Global Days				Modifiers			
Non-Fac Total	Fac Total	50	51	62	80	50	51	62	80
28.23	24.89	090	1	2	0	1			

**AMA:** Mar 1998:7

**67229** Treatment of extensive or progressive retinopathy, one or more sessions; preterm infant (less than 37 weeks gestation at birth), performed from birth up to 1 year of age (eg, retinopathy of prematurity), photocoagulation or cryotherapy **A I**

**NO** Do not code 69990.

**CTI** Code 67229 is a unilateral procedure, but if it is performed on both sides of the body, append modifier 50 with the code. Individual payers may prefer 67229 coded twice with modifier 50 appended the second time.

RVU		Global Days				Modifiers			
Non-Fac Total	Fac Total	50	51	62	80	50	51	62	80
26.71	26.71	090	1	2	0	1			

**Posterior Scleral Procedures**

**Posterior Scleral Repair**

**67250** Scleral reinforcement (separate procedure); without graft **A2 I**

**GO** Scleral lesion excision – 66130. Scleral staphyloma repair – 66220 or 66225.

**NO** Do not code 69990.

RVU		Global Days				Modifiers			
Non-Fac Total	Fac Total	50	51	62	80	50	51	62	80
17.86	17.86	090	1	2	1	1			

**67255** Scleral reinforcement (separate procedure); with graft **A2 I**

**NO** Do not code 69990.

RVU		Global Days				Modifiers			
Non-Fac Total	Fac Total	50	51	62	80	50	51	62	80
19.11	19.11	090	1	2	1	2			

**Other Posterior Scleral Procedures**

**67299** Unlisted procedure, posterior segment **I x**

RVU		Global Days				Modifiers			
Non-Fac Total	Fac Total	50	51	62	80	50	51	62	80
0.00	0.00	YYY	1	2	1	0			

**Extraocular Muscle Procedures**

**67311** Strabismus surgery, recession or resection procedure; one horizontal muscle **A2 I**

**GO** Add adjustable sutures – 67335.

**NO** Do not code 69990.

RVU		Global Days				Modifiers			
Non-Fac Total	Fac Total	50	51	62	80	50	51	62	80
13.69	13.69	090	1	2	0	1			

**AMA:** Summer 1993:20, Mar 1997:5, Nov 1998:19, Sep 2002:10

**Strabismus surgery**

