

## A

**AAT** (alpha-1 antitrypsin) deficiency 273.4  
**AAV (disease) (illness) (infection)** — see Human immunodeficiency virus (disease) (illness) (infection)  
**Abactio** — see Abortion, induced  
**Abactus venter** — see Abortion, induced  
**Abarognosis** 781.99  
**Abasia** (-astasia) 307.9  
 atactica 781.3  
 choreic 781.3  
 hysterical 300.11  
 paroxysmal trepidant 781.3  
 spastic 781.3  
 trembling 781.3  
 trepidans 781.3  
**Abderhalden-Kaufmann-Lignac syndrome** (cystinosis) 270.0  
**Abdomen, abdominal** — see also condition  
 accordion 306.4  
 acute 789.0 **✓**  
 angina 557.1  
 burst 868.00  
 convulsive equivalent (see also Epilepsy) 345.5 **✓**  
 heart 746.87  
 muscle deficiency syndrome 756.79  
 obstipum 756.79  
**Abdominalgia** 789.0 **✓**  
 periodic 277.31  
**Abduction contracture, hip or other joint** — see Contraction, joint  
**Abercrombie's syndrome** (amyloid degeneration) 277.39  
**Aberrant** (congenital) — see also Malposition, congenital  
 adrenal gland 759.1  
 blood vessel NEC 747.60  
 arteriovenous NEC 747.60  
 cerebrovascular 747.81  
 gastrointestinal 747.61  
 lower limb 747.64  
 renal 747.62  
 spinal 747.82  
 upper limb 747.63  
 breast 757.6  
 endocrine gland NEC 759.2  
 gastrointestinal vessel (peripheral) 747.61  
 hepatic duct 751.69  
 lower limb vessel (peripheral) 747.64  
 pancreas 751.7  
 parathyroid gland 759.2  
 peripheral vascular vessel NEC 747.60  
 pituitary gland (pharyngeal) 759.2  
 renal blood vessel 747.62  
 sebaceous glands, mucous membrane, mouth 750.26  
 spinal vessel 747.82  
 spleen 759.0  
 testis (descent) 752.51  
 thymus gland 759.2  
 thyroid gland 759.2  
 upper limb vessel (peripheral) 747.63  
**Aberratio**  
 lactis 757.6  
 testis 752.51  
**Aberration** — see also Anomaly  
 chromosome — see Anomaly, chromosome(s)  
 distastial 368.9  
 mental (see also Disorder, mental, nonpsychotic) 300.9  
**Abetalipoproteinemia** 272.5  
**Abionarce** 780.79  
**Abiotrophy** 799.89  
**Ablatio**  
 placentae — see Placenta, ablatio  
 retinae (see also Detachment, retina) 361.9  
**Ablation**  
 pituitary (gland) (with hypofunction) 253.7  
 placenta — see Placenta, ablatio  
 uterus 621.8  
**Ablepharia, ablepharon, ablephary** 743.62  
**Ablepsia** — see Blindness  
**Ablepsy** — see Blindness  
**Ablutomania** 300.3

**Abnormal, abnormality, abnormalities** — see also Anomaly  
 acid-base balance 276.4  
 fetus or newborn — see Distress, fetal  
 adaptation curve, dark 368.63  
 alveolar ridge 525.9  
 amnion 658.9 **✓**  
 affecting fetus or newborn 762.9  
 anatomical relationship NEC 759.9  
 apertures, congenital, diaphragm 756.6  
 auditory perception NEC 388.40  
 autosomes NEC 758.5  
 13 758.1  
 18 758.2  
 21 or 22 758.0  
 D<sub>1</sub> 758.1  
 E<sub>3</sub> 758.2  
 G 758.0  
 ballistocardiogram 794.39  
 basal metabolic rate (BMR) 794.7  
 biosynthesis, testicular androgen 257.2  
 blood level (of)  
 cobalt 790.6  
 copper 790.6  
 iron 790.6  
 lead 790.6  
 lithium 790.6  
 magnesium 790.6  
 mineral 790.6  
 zinc 790.6  
 blood pressure  
 elevated (without diagnosis of hypertension) 796.2  
 low (see also Hypotension) 458.9  
 reading (incidental) (isolated) (nonspecific) 796.3  
 blood sugar 790.29  
 bowel sounds 787.5  
 breathing behavior — see Respiration  
 caloric test 794.19  
 cervix (acquired) NEC 622.9  
 congenital 752.40  
 in pregnancy or childbirth 654.6 **✓**  
 causing obstructed labor 660.2 **✓**  
 affecting fetus or newborn 763.1  
 chemistry, blood NEC 790.6  
 chest sounds 786.7  
 chorion 658.9 **✓**  
 affecting fetus or newborn 762.9  
 chromosomal NEC 758.89  
 analysis, nonspecific result 795.2  
 autosomes (see also Abnormal, autosomes NEC) 758.5  
 fetal, (suspected) affecting management of pregnancy 655.1 **✓**  
 sex 758.81  
 clinical findings NEC 796.4  
 communication — see Fistula  
 configuration of pupils 379.49  
 coronary  
 artery 746.85  
 vein 746.9  
 cortisol-binding globulin 255.8  
 course, Eustachian tube 744.24  
 creatinine clearance 794.4  
 dentofacial NEC 524.9  
 functional 524.50  
 specified type NEC 524.89  
 development, developmental NEC 759.9  
 bone 756.9  
 central nervous system 742.9  
 direction, teeth 524.30  
 Dynia (see also Defect, coagulation) 286.9  
 Ebstein 746.2  
 echocardiogram 793.2  
 echoencephalogram 794.01  
 echogram NEC — see Findings, abnormal, structure  
 electrocardiogram (ECG) (EKG) 794.31  
 electroencephalogram (EEG) 794.02  
 electromyogram (EMG) 794.17  
 ocular 794.14  
 electro-oculogram (EOG) 794.12  
 electroretinogram (ERG) 794.11  
 erythrocytes 289.9

**Abnormal, abnormality, abnormalities** — see also Anomaly — continued  
 erythrocytes — continued  
 congenital, with perinatal jaundice 282.9 [774.0]  
 Eustachian valve 746.9  
 excitability under minor stress 301.9  
 fat distribution 782.9  
 feces 787.7  
 fetal heart rate — see Distress, fetal  
 fetus NEC  
 affecting management of pregnancy — see Pregnancy, management affected by, fetal  
 causing disproportion 653.7 **✓**  
 affecting fetus or newborn 763.1  
 causing obstructed labor 660.1 **✓**  
 affecting fetus or newborn 763.1  
 findings without manifest disease — see Findings, abnormal  
 fluid  
 amniotic 792.3  
 cerebrospinal 792.0  
 peritoneal 792.9  
 pleural 792.9  
 synovial 792.9  
 vaginal 792.9  
 forces of labor NEC 661.9 **✓**  
 affecting fetus or newborn 763.7  
 form, teeth 520.2  
 function studies  
 auditory 794.15  
 bladder 794.9  
 brain 794.00  
 cardiovascular 794.30  
 endocrine NEC 794.6  
 kidney 794.4  
 liver 794.8  
 nervous system  
 central 794.00  
 peripheral 794.19  
 oculomotor 794.14  
 pancreas 794.9  
 placenta 794.9  
 pulmonary 794.2  
 retina 794.11  
 special senses 794.19  
 spleen 794.9  
 thyroid 794.5  
 vestibular 794.16  
 gait 781.2  
 hysterical 300.11  
 gastrin secretion 251.5  
 globulin  
 cortisol-binding 255.8  
 thyroid-binding 246.8  
 glucagon secretion 251.4  
 glucose 790.29  
 in pregnancy, childbirth, or puerperium 648.8 **✓**  
 fetus or newborn 775.0  
 non-fasting 790.29  
 gravitational (G) forces or states 994.9  
 hair NEC 704.2  
 hard tissue formation in pulp 522.3  
 head movement 781.0  
 heart  
 rate  
 fetus, affecting liveborn infant  
 before the onset of labor 763.81  
 during labor 763.82  
 unspecified as to time of onset 763.83  
 intrauterine  
 before the onset of labor 763.81  
 during labor 763.82  
 unspecified as to time of onset 763.83  
 newborn  
 before the onset of labor 763.81  
 during labor 763.82  
 unspecified as to time of onset 763.83  
 shadow 793.2  
 sounds NEC 785.3

**Abnormal, abnormality, abnormalities** — see also Anomaly — continued  
 hemoglobin (see also Disease, hemoglobin) 282.7  
 trait — see Trait, hemoglobin, abnormal  
 hemorrhage, uterus — see Hemorrhage, uterus  
 histology NEC 795.4  
 increase  
 in  
 appetite 783.6  
 development 783.9  
 involuntary movement 781.0  
 jaw closure 524.51  
 karyotype 795.2  
 knee jerk 796.1  
 labor NEC 661.9 **✓**  
 affecting fetus or newborn 763.7  
 laboratory findings — see Findings, abnormal  
 length, organ or site, congenital — see Distortion  
 liver function test 790.6  
 loss of height 781.91  
 loss of weight 783.21  
 lung shadow 793.1  
 mammogram 793.80  
 calcification 793.89  
 calculus 793.89  
 microcalcification 793.81  
 Mantoux test 795.5  
 membranes (fetal)  
 affecting fetus or newborn 762.9  
 complicating pregnancy 658.8 **✓**  
 menstruation — see Menstruation  
 metabolism (see also condition) 783.9  
 movement 781.0  
 disorder NEC 333.90  
 sleep related, unspecified 780.58  
 specified NEC 333.99  
 head 781.0  
 involuntary 781.0  
 specified type NEC 333.99  
 muscle contraction, localized 728.85  
 myoglobin (Aberdeen) (Annapolis) 289.9  
 narrowness, eyelid 743.62  
 optokinetic response 379.57  
 organs or tissues of pelvis NEC  
 in pregnancy or childbirth 654.9 **✓**  
 affecting fetus or newborn 763.89  
 causing obstructed labor 660.2 **✓**  
 affecting fetus or newborn 763.1  
 origin — see Malposition, congenital  
 palmar creases 757.2  
 Papanicolaou (smear)  
 anus 796.70  
 with  
 atypical squamous cells  
 cannot exclude high grade  
 squamous intraepithelial  
 lesion (ASC-H) 796.72  
 of undetermined significance  
 (ASC-US) 796.71  
 cytologic evidence of malignancy  
 796.76  
 high grade squamous intraepithelial  
 lesion (HGSIL) 796.74  
 low grade squamous intraepithelial  
 lesion (LGSIL) 796.73  
 glandular 796.70  
 specified finding NEC 796.79  
 cervix 795.00  
 with  
 atypical squamous cells  
 cannot exclude high grade  
 squamous intraepithelial  
 lesion (ASC-H) 795.02  
 of undetermined significance  
 (ASC-US) 795.01  
 cytologic evidence of malignancy  
 795.06  
 high grade squamous intraepithelial  
 lesion (HGSIL) 795.04  
 low grade squamous intraepithelial  
 lesion (LGSIL) 795.03  
 nonspecific finding NEC 795.09  
 other site 796.9

## 427-428.0

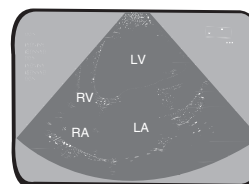
## CIRCULATORY SYSTEM

## Tabular List

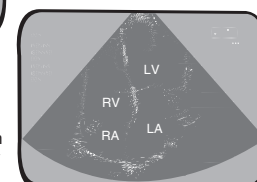
- ✓<sup>4th</sup> **427 Cardiac dysrhythmias**  
**EXCLUDES** that complicating:  
 abortion (634-638 with .7, 639.8)  
 ectopic or molar pregnancy (639.8)  
 labor or delivery (668.1, 669.4)  
**DEF:** Disruption or disturbance in the rhythm of heartbeats.  
**AHA:** J-A, '85, 15
- 427.0 Paroxysmal supraventricular tachycardia**  
 Paroxysmal tachycardia:  
 atrial [PAT]  
 atrioventricular [AV]  
 junctional  
 nodal  
**DEF:** Rapid atrial rhythm.
- 427.1 Paroxysmal ventricular tachycardia**  
 Ventricular tachycardia (paroxysmal)  
**DEF:** Rapid ventricular rhythm.  
**AHA:** ▶2Q, '09, 14; ◀1Q, '08, 14; 2Q, '06, 15-16; 3Q, '95, 9; M-A, '86, 11  
**TIP:** If a ventricular tachycardia is documented as sustained or nonsustained but is induced during an EP study, assign 427.1.  
**I47.2** Ventricular tachycardia I-10
- 427.2 Paroxysmal tachycardia, unspecified**  
 Bouveret-Hoffmann syndrome  
 Paroxysmal tachycardia:  
 NOS  
 essential
- ✓<sup>5th</sup> **427.3 Atrial fibrillation and flutter**  
**TIP:** Assign V58.61 Long-term (current) use of anticoagulants, as a secondary diagnosis if the patient is maintained on Coumadin.
- 427.31 Atrial fibrillation**  
**DEF:** Irregular, rapid atrial contractions.  
**AHA:** 4Q, '08, 135; 3Q, '05, 8; 4Q, '04, 78, 121; 3Q, '04, 7; 4Q, '03, 95, 105; 1Q, '03, 8; 2Q, '99, 17; 3Q, '95, 8  
**I48.0** Atrial fibrillation I-10
- 427.32 Atrial flutter**  
**DEF:** Regular, rapid atrial contractions.  
**AHA:** 4Q, '03, 94  
**I48.1** Atrial flutter I-10
- ✓<sup>5th</sup> **427.4 Ventricular fibrillation and flutter**
- 427.41 Ventricular fibrillation**  
**DEF:** Irregular, rapid ventricular contractions.  
**AHA:** ▶2Q, '09, 14-15; ◀3Q, '02, 5
- 427.42 Ventricular flutter**  
**DEF:** Regular, rapid, ventricular contractions.
- 427.5 Cardiac arrest**  
 Cardiorespiratory arrest  
**AHA:** 3Q, '02, 5; 2Q, '00, 12; 3Q, '95, 8; 2Q, '88, 8  
**I46.9** Cardiac arrest cause unspecified I-10
- ✓<sup>5th</sup> **427.6 Premature beats**
- 427.60 Premature beats, unspecified**  
 Ectopic beats  
 Extrasystoles  
 Extrasystolic arrhythmia  
 Premature contractions or systoles NOS
- 427.61 Supraventricular premature beats**  
 Atrial premature beats, contractions, or systoles
- 427.69 Other**  
 Ventricular premature beats, contractions, or systoles  
**AHA:** 4Q, '93, 42

- ✓<sup>5th</sup> **427.8 Other specified cardiac dysrhythmias**
- 427.81 Sinoatrial node dysfunction**  
 Sinus bradycardia:  
 persistent  
 severe  
 Syndrome:  
 sick sinus  
 tachycardia-bradycardia  
**EXCLUDES** sinus bradycardia NOS (427.89)  
**DEF:** Complex cardiac arrhythmia; appears as severe sinus bradycardia, sinus bradycardia with tachycardia, or sinus bradycardia with atrioventricular block.  
**AHA:** 3Q, '00, 8  
**I49.5** Sick sinus syndrome I-10
- 427.89 Other**  
 Rhythm disorder:  
 coronary sinus  
 ectopic  
 nodal  
 Wandering (atrial) pacemaker  
**EXCLUDES** carotid sinus syncope (337.0)  
 neonatal bradycardia (779.81)  
 neonatal tachycardia (779.82)  
 reflex bradycardia (337.0)  
 tachycardia NOS (785.0)  
**I49.8** Other specified cardiac arrhythmias I-10
- 427.9 Cardiac dysrhythmia, unspecified**  
 Arrhythmia (cardiac) NOS  
**AHA:** 2Q, '89, 10
- ✓<sup>4th</sup> **428 Heart failure**  
 Code, if applicable, heart failure due to hypertension first (402.0-402.9, with fifth-digit 1 or 404.0-404.9 with fifth-digit 1 or 3)  
**EXCLUDES** following cardiac surgery (429.4)  
 rheumatic (398.91)  
 that complicating:  
 abortion (634-638 with .7, 639.8)  
 ectopic or molar pregnancy (639.8)  
 labor or delivery (668.1, 669.4)  
**AHA:** 4Q, '02, 49; 3Q, '98, 5; 2Q, '90, 16; 2Q, '90, 19; 2Q, '89, 10; 3Q, '88, 3
- 428.0 Congestive heart failure, unspecified**  
 Congestive heart disease  
 Right heart failure (secondary to left heart failure)  
**EXCLUDES** fluid overload NOS (276.6)  
**DEF:** Mechanical inadequacy; caused by inability of heart to pump and circulate blood; results in fluid collection in lungs, hypertension, congestion and edema of tissue.  
**AHA:** ▶1Q, '09, 8, 18; ◀4Q, '08, 72, 180, 182; 3Q, '08, 12; 3Q, '07, 9; 1Q, '07, 20; 3Q, '06, 7; 4Q, '05, 120; 3Q, '05, 8; 1Q, '05, 5, 9; 1Q, '05, 5, 9; 4Q, '04, 140; 3Q, '04, 7; 4Q, '03, 109; 1Q, '03, 9; 4Q, '02, 52; 2Q, '01, 13; 4Q, '00, 48; 2Q, '00, 16; 1Q, '00, 22; 4Q, '99, 4; 1Q, '99, 11; 4Q, '97, 55; 3Q, '97, 10; 3Q, '96, 9; 3Q, '91, 18; 3Q, '91, 19; 2Q, '89, 12  
**TIP:** Assign additional code(s) from subcategory 428.2, 428.3, or 428.4 to specify the type of heart failure.  
**I50.9** Heart failure unspecified I-10

## Echocardiography of Heart Failure



Systolic dysfunction with dilated LV



Diastolic dysfunction with LV hypertrophy

Four-chamber echocardiograms, two-dimensional views.  
 LV: Left ventricle  
 RV: Right ventricle  
 RA: Right atrium  
 LA: Left atrium

N Newborn Age: 0

P Pediatric Age: 0-17

M Maternity Age: 12-55

A Adult Age: 15-124

## 438.3–440.29

## CIRCULATORY SYSTEM

## Tabular List

- ✓<sup>5th</sup> 438.3 Monoplegia of upper limb  
DEF: Paralysis of one limb or one muscle group.
- 438.30 Monoplegia of upper limb affecting unspecified side
- 438.31 Monoplegia of upper limb affecting dominant side
- 438.32 Monoplegia of upper limb affecting nondominant side
- ✓<sup>5th</sup> 438.4 Monoplegia of lower limb
- 438.40 Monoplegia of lower limb affecting unspecified side
- 438.41 Monoplegia of lower limb affecting dominant side
- 438.42 Monoplegia of lower limb affecting nondominant side
- ✓<sup>5th</sup> 438.5 Other paralytic syndrome  
Use additional code to identify type of paralytic syndrome, such as:  
locked-in state (344.81)  
quadriplegia (344.00-344.09)
- EXCLUDES** late effects of cerebrovascular accident with:  
hemiplegia/hemiparesis (438.20-438.22)  
monoplegia of lower limb (438.40-438.42)  
monoplegia of upper limb (438.30-438.32)
- 438.50 Other paralytic syndrome affecting unspecified side
- 438.51 Other paralytic syndrome affecting dominant side
- 438.52 Other paralytic syndrome affecting nondominant side
- 438.53 Other paralytic syndrome, bilateral  
AHA: 4Q, '98, 39
- 438.6 Alterations of sensations  
Use additional code to identify the altered sensation
- 438.7 Disturbances of vision  
Use additional code to identify the visual disturbance  
AHA: 4Q, '02, 56
- ✓<sup>5th</sup> 438.8 Other late effects of cerebrovascular disease
- 438.81 Apraxia  
DEF: Inability to activate learned movements; no known sensory or motor impairment.
- 438.82 Dysphagia  
Use additional code to identify the type of dysphagia, if known (787.20-787.29)  
DEF: Inability or difficulty in swallowing.  
AHA: 4Q, '07, 94  
I69.991 Dysphagia following uns cerebrovascular disease I-10
- 438.83 Facial weakness  
Facial droop
- 438.84 Ataxia  
AHA: 4Q, '02, 56
- 438.85 Vertigo
- 438.89 Other late effects of cerebrovascular disease  
Use additional code to identify the late effect  
AHA: ▶2Q, '09, 10; ◀1Q, '05, 13; 4Q, '98, 39  
TIP: Assign 438.89 and 728.87 Muscle weakness, for residual weakness secondary to late effect of CVA.  
I69.998 Other sequelae flw uns cerebrovascular disease I-10
- 438.9 Unspecified late effects of cerebrovascular disease

## DISEASES OF ARTERIES, ARTERIOLES, AND CAPILLARIES (440-449)

- ✓<sup>4th</sup> 440 Atherosclerosis
- INCLUDES** arteriosclerosis  
arteriosclerosis (obliterans) (senile)  
arteriosclerotic vascular disease  
atheroma  
degeneration:  
arterial  
arteriovascular  
vascular  
endarteritis deformans or obliterans  
senile:  
arteritis  
endarteritis
- EXCLUDES** atheroembolism (445.01-445.89)  
atherosclerosis of bypass graft of the extremities (440.30-440.32)
- DEF: Stricture and reduced elasticity of artery; due to plaque deposits.
- 440.0 Of aorta A
- AHA: 2Q, '93, 7; 2Q, '93, 8; 4Q, '88, 8
- 440.1 Of renal artery A
- EXCLUDES** atherosclerosis of renal arterioles (403.00-403.91)
- ✓<sup>5th</sup> 440.2 Of native arteries of the extremities  
Use additional code, if applicable, to identify chronic total occlusion of artery of the extremities (440.4)
- EXCLUDES** atherosclerosis of bypass graft of the extremities (440.30-440.32)
- AHA: 4Q, '94, 49; 4Q, '93, 27; 4Q, '92, 25; 3Q, '90, 15; M-A, '87, 6  
TIP: Codes are listed in order of increasing severity; all patients who have gangrene (regardless of whether ulceration, rest pain, and/or intermittent claudication are present) are coded to 440.24. Patients without gangrene, but with ulceration (regardless of whether they also suffer from rest pain or intermittent claudication) are coded to 440.23.
- 440.20 Atherosclerosis of the extremities, unspecified A
- I70.209 Uns atherosclero natv art of extrem uns extrem I-10
- 440.21 Atherosclerosis of the extremities with intermittent claudication A
- DEF: Atherosclerosis; marked by pain, tension and weakness after walking; no symptoms while at rest.  
I70.219 Atherosclerosis native arteries ext interm claud uns ext I-10
- 440.22 Atherosclerosis of the extremities with rest pain A
- INCLUDES** any condition classifiable to 440.21  
DEF: Atherosclerosis, marked by pain, tension and weakness while at rest.
- 440.23 Atherosclerosis of the extremities with ulceration A
- INCLUDES** any condition classifiable to 440.21 and 440.22  
Use additional code for any associated ulceration (707.10-707.9)  
AHA: 4Q, '00, 44  
I70.249 Atherosclero natv art I leg ulceration uns site I-10
- 440.24 Atherosclerosis of the extremities with gangrene
- INCLUDES** any condition classifiable to 440.21, 440.22, and 440.23 with ischemic gangrene 785.4  
Use additional code for any associated ulceration (707.10-707.9)  
**EXCLUDES** gas gangrene (040.0)  
AHA: 4Q, '03, 109; 3Q, '03, 14; 4Q, '95, 54; 1Q, '95, 11
- 440.29 Other A

N Newborn Age: 0

P Pediatric Age: 0-17

M Maternity Age: 12-55

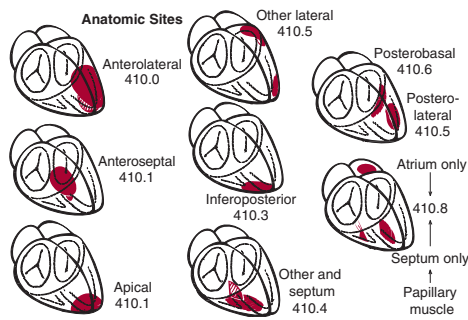
A Adult Age: 15-124

## 410.1–411.89

## CIRCULATORY SYSTEM

## Tabular List

## Acute Myocardial Infarction



- § **✓5<sup>th</sup>** **410.1 Of other anterior wall** **MCC 1**  
 [0-2] Infarction:  
 anterior (wall) NOS } (with contiguous portion of  
 anteroapical } intraventricular  
 anteroseptal } septum)  
 ST elevation myocardial infarction (STEMI) of other  
 anterior wall  
**CC Excl:** For code 410.11: See code 410.0  
**AHA:** For code 410.11: 3Q, '03, 10
- § **✓5<sup>th</sup>** **410.2 Of inferolateral wall** **MCC 1**  
 [0-2] ST elevation myocardial infarction (STEMI) of inferolateral  
 wall  
**CC Excl:** For code 410.21: See code 410.0
- § **✓5<sup>th</sup>** **410.3 Of inferoposterior wall** **MCC 1**  
 [0-2] ST elevation myocardial infarction (STEMI) of  
 inferoposterior wall  
**CC Excl:** For code 410.31: See code 410.0
- § **✓5<sup>th</sup>** **410.4 Of other inferior wall** **MCC 1**  
 [0-2] Infarction:  
 diaphragmatic wall } (with contiguous portion of  
 NOS } intraventricular  
 inferior (wall) NOS } septum)  
 ST elevation myocardial infarction (STEMI) of other inferior  
 wall  
**CC Excl:** For code 410.41: See code 410.0  
**AHA:** 1Q, '00, 7, 26; 4Q, '99, 9; 3Q, '97, 10; **For code 410.41:** 2Q,  
 '01, 8, 9  
**I21.19** STEMI involv oth coronary artery of inferior wall **I-10**
- § **✓5<sup>th</sup>** **410.5 Of other lateral wall** **MCC 1**  
 [0-2] Infarction:  
 apical-lateral  
 basal-lateral  
 high lateral  
 posterolateral  
 ST elevation myocardial infarction (STEMI) of other lateral  
 wall  
**CC Excl:** For code 410.51: See code 410.0
- § **✓5<sup>th</sup>** **410.6 True posterior wall infarction** **MCC 1**  
 [0-2] Infarction:  
 posterobasal  
 strictly posterior  
 ST elevation myocardial infarction (STEMI) of true  
 posterior wall  
**CC Excl:** For code 410.61: See code 410.0
- § **✓5<sup>th</sup>** **410.7 Subendocardial infarction** **MCC 1**  
 [0-2] Non-ST elevation myocardial infarction (NSTEMI)  
 Nontransmural infarction  
**CC Excl:** For code 410.71: See code 410.0  
**AHA:** 1Q, '00, 7; **For code 410.71:** 4Q, '05, 71; 2Q, '05, 19  
**I21.4** Non-ST elevation (NSTEMI) myocardial infarction **I-10**

- § **✓5<sup>th</sup>** **410.8 Of other specified sites** **MCC 1**  
 [0-2] Infarction of:  
 atrium  
 papillary muscle  
 septum alone  
 ST elevation myocardial infarction (STEMI) of other  
 specified sites  
**CC Excl:** For code 410.81: See code 410.0
- § **✓5<sup>th</sup>** **410.9 Unspecified site** **MCC 1**  
 [0-2] Acute myocardial infarction NOS  
 Coronary occlusion NOS  
 Myocardial infarction NOS  
**CC Excl:** For code 410.91: See code 410.0  
**AHA:** 1Q, '96, 17; 1Q, '92, 9; **For code 410.91:** 2Q, '05, 18;  
 3Q, '02, 5  
**I21.3** ST elevation myocardial infarction of uns site **I-10**
- ✓4<sup>th</sup>** **411 Other acute and subacute forms of ischemic heart disease**  
**AHA:** 4Q, '94, 55; 3Q, '91, 24
- 411.0 Postmyocardial infarction syndrome** **CC**  
 Dressler's syndrome  
**DEF:** Complication developing several days/weeks after  
 myocardial infarction; symptoms include fever, leukocytosis,  
 chest pain, pericarditis, pleurisy, and pneumonitis; tendency  
 to recur.  
**CC Excl:** 411.0, 411.81-411.89, 459.89-459.9
- 411.1 Intermediate coronary syndrome** **CC**  
 Impending infarction  
 Preinfarction angina  
 Preinfarction syndrome  
 Unstable angina  
**EXCLUDES** *angina (pectoris) (413.9)*  
*decubitus (413.0)*  
**DEF:** A condition representing an intermediate stage between  
 angina of effort and acute myocardial infarction. It is often  
 documented by the physician as "unstable angina."  
**CC Excl:** 398.91, 402.01, 402.11, 402.91, 404.01, 404.03, 404.11,  
 404.13, 404.91, 404.93, 410.00-410.92, 411.1-411.89,  
 413.0-414.00, 414.2-414.9, 428.0-428.1, 428.9, 459.89-459.9,  
 785.50-785.51  
**AHA:** 3Q, '07, 9; 4Q, '05, 105; 2Q, '04, 3; 1Q, '03, 12; 3Q, '01, 15;  
 2Q, '01, 7, 9; 4Q, '98, 86; 2Q, '96, 10; 3Q, '91, 24; 1Q, '91, 14; 3Q,  
 '90, 6; 4Q, '89, 10  
**TIP:** Do not assign code 411.1 on the same episode of care as  
 an acute myocardial infarction (category 410). Assign 411.1  
 for accelerated angina.  
**I20.0** Unstable angina **I-10**
- ✓5<sup>th</sup>** **411.8 Other**  
**AHA:** 3Q, '91, 18; 3Q, '89, 4
- 411.81 Acute coronary occlusion without myocardial infarction** **CC**  
 Acute coronary (artery):  
 embolism } without or not  
 obstruction } resulting in  
 occlusion } myocardial  
 thrombosis } infarction  
**EXCLUDES** *obstruction without infarction due to*  
*atherosclerosis*  
*(414.00-414.07)*  
*occlusion without infarction due to*  
*atherosclerosis*  
*(414.00-414.07)*  
**DEF:** Interrupted blood flow to a portion of the  
 heart; without tissue death.  
**CC Excl:** 410.00-411.89, 413.0-413.9, 414.8-414.9,  
 459.89-459.9  
**AHA:** 3Q, '91, 24; 1Q, '91, 14
- 411.89 Other** **CC**  
 Coronary insufficiency (acute)  
 Subendocardial ischemia  
**CC Excl:** See code: 411.81  
**AHA:** 3Q, '01, 14; 1Q, '92, 9

§ Requires fifth digit. Valid digits are in [brackets] under each code. See category 410 for codes and definitions.

**N** Newborn Age: 0

**P** Pediatric Age: 0-17

**M** Maternity Age: 12-55

**A** Adult Age: 15-124

**MCC** Major CC Condition

**CC** CC Condition

**HIV** HIV Related Dx

**412 Old myocardial infarction**

Healed myocardial infarction  
Past myocardial infarction diagnosed on ECG [EKG] or other special investigation, but currently presenting no symptoms

**AHA:** 2Q, '03, 10; 2Q, '01, 9; 3Q, '98, 15; 2Q, '91, 22; 3Q, '90, 7

**TIP:** Assign for any acute myocardial infarction stated to be older than 8 weeks.

**I25.2** Old myocardial infarction **I-10**

**413 Angina pectoris**

**DEF:** Severe constricting pain in the chest, often radiating from the precordium to the left shoulder and down the arm, due to ischemia of the heart muscle; usually caused by coronary disease; pain is often precipitated by effort or excitement.

**413.0 Angina decubitus** **CC**

Nocturnal angina

**DEF:** Angina occurring only in the recumbent position.

**CC Excl:** 410.00-410.92, 411.1-411.89, 413.0-413.9, 414.8-414.9, 459.89-459.9

**413.1 Prinzmetal angina** **CC**

Variant angina pectoris

**DEF:** Angina occurring when patient is recumbent; associated with ST-segment elevations.

**CC Excl:** See code: 413.0

**AHA:** 3Q, '06, 23

**413.9 Other and unspecified angina pectoris**

Angina:	Anginal syndrome
NOS	Status anginosus
cardiac	Stenocardia
►equivalent◀	Syncope anginosa
of effort	

►Use additional code(s) for symptoms associated with angina equivalent◀

**EXCLUDES** preinfarction angina (411.1)

**AHA:** 2Q, '08, 16; 3Q, '02, 4; 3Q, '91, 16; 3Q, '90, 6

**TIP:** For patients with both angina and coronary artery disease, sequence the CAD (subcategory 414.0) code first.

**I20.9** Angina pectoris unspecified **I-10**

**414 Other forms of chronic ischemic heart disease**

**EXCLUDES** arteriosclerotic cardiovascular disease [ASCVD] (429.2) cardiovascular: arteriosclerosis or sclerosis (429.2) degeneration or disease (429.2)

**414.0 Coronary atherosclerosis**

Arteriosclerotic heart disease [ASHD]

Atherosclerotic heart disease

Coronary (artery):

arteriosclerosis  
arteritis or endarteritis  
atheroma  
sclerosis  
stricture

Use additional code, if applicable, to identify chronic total occlusion of coronary artery (414.2)

**EXCLUDES** embolism of graft (996.72) occlusion NOS of graft (996.72) thrombus of graft (996.72)

**DEF:** A chronic condition marked by thickening and loss of elasticity of the coronary artery; caused by deposits of plaque containing cholesterol, lipid material and lipophages.

**AHA:** 2Q, '97, 13; 2Q, '95, 17; 4Q, '94, 49; 2Q, '94, 13; 1Q, '94, 6; 3Q, '90, 7

**414.00 Of unspecified type of vessel, native or graft** **A**

**AHA:** 1Q, '04, 24; 2Q, '03, 16; 3Q, '01, 15; 4Q, '99, 4; 3Q, '97, 15; 4Q, '96, 31

**414.01 Of native coronary artery** **A**

**DEF:** Plaque deposits in natural heart vessels.

**AHA:** 3Q, '08, 10; 2Q, '08, 16; 3Q, '06, 25; 4Q, '05, 71; 2Q, '04, 3; 4Q, '03, 108; 3Q, '03, 9, 14; 3Q, '02, 4-9; 3Q, '01, 15; 2Q, '01, 8, 9; 3Q, '97, 15; 2Q, '96, 10; 4Q, '96, 31

**TIP:** Assign for documentation of CAD NOS in a patient with no history of coronary artery bypass procedure.

**I25.10** ASHD of native cor artery w/o angina pectoris **I-10**

**414.02 Of autologous vein bypass graft** **CC A**

**DEF:** Plaque deposit in grafted vein originating within patient.

**CC Excl:** 414.00-414.05, 414.07, 414.2-414.3

**414.03 Of nonautologous biological bypass graft** **CC A**

**DEF:** Plaque deposits in grafted vessel originating outside patient.

**CC Excl:** See code: 414.02

**414.04 Of artery bypass graft** **CC A**

Internal mammary artery

**DEF:** Plaque deposits in grafted artery originating within patient.

**CC Excl:** See code: 414.02

**AHA:** 4Q, '96, 31

**414.05 Of unspecified type of bypass graft** **A**

Bypass graft NOS

**AHA:** 3Q, '97, 15; 4Q, '96, 31

**414.06 Of native coronary artery of transplanted heart** **CC**

**CC Excl:** 414.00-414.07, 414.2-414.3

**AHA:** 4Q, '03, 60; 4Q, '02, 53

**414.07 Of bypass graft (artery) (vein) of transplanted heart** **CC A**

**CC Excl:** 414.00-414.06, 414.2-414.3

**414.1 Aneurysm and dissection of heart**

**AHA:** 4Q, '02, 54

**414.10 Aneurysm of heart (wall)** **CC**

Aneurysm (arteriovenous):  
mural  
ventricular

**CC Excl:** 414.10-414.11, 414.19

**414.11 Aneurysm of coronary vessels**

Aneurysm (arteriovenous) of coronary vessels

**DEF:** Dilatation of all three-vessel wall layers forming a sac filled with blood.

**AHA:** 3Q, '03, 10; 1Q, '99, 17

**414.12 Dissection of coronary artery** **MCC**

**DEF:** A tear in the intimal arterial wall of a coronary artery resulting in the sudden intrusion of blood within the layers of the wall.

**CC Excl:** 414.12, 443.29, 447.2, 447.5-447.9

**414.19 Other aneurysm of heart** **CC**

Arteriovenous fistula, acquired, of heart

**CC Excl:** See code: 414.10

Arteries of the Heart

