

Procedural Coding Professional

The Ultimate Guide
to CPT[®] Coding



Professional Edition

2009

Contents

Prefaceii
Introduction	iii
Using the Procedural Coding Professional	iv
Conventions	v
2009 CPT Code Changes	vii
Anatomical Illustrations	
Anatomy Plates	1

Alphabetical Index	1
---------------------------------	----------

Tabular List

Evaluation and Management Services	3
Anesthesia Services	29
Surgical Procedures	45
Radiological Procedures	389
Pathology/Laboratory Services	457
Medicine Procedures/Services	529

Congenital

- atresia
 - exploration, bile ducts, 47700
 - small intestine repair, 44126-44128
- AV fistula repair, 35180-35184
- cardiac anomalies
 - diagnostic study, 93303-93304, 93315-93317
 - treatment, 93530-93533, 93580-93581
- defect repair
 - esophagus, 43313-43314
- hip dislocation treatment, 27256-27259
- megacolon
 - biopsy, 44322, 45100
 - repair, 45120-45121

Conjunctiva

- biopsy, 68100
- fistulization to nasal cavity, 68745-68750
- foreign body removal, 65205-65210
- lesion
 - destruction, 68135
 - excision, 68110-68130
- repair, 65270-65273, 67930-67935, 67961-67966, 68320-68335

Construction

- artificial vagina, 57291-57292
- conduit
 - apical-aortic, 33404
 - ventricle to pulmonary artery, 33608, 33697
- gastric tube, 43832
- intrapulmonary artery tunnel, 33505
- tracheoesophageal fistula, 31611

Consultation

- inpatient, 99251-99255
- medical physics, 77336-77370
- outpatient, 99241-99245
- pathology, 80500-80502, 88321-88334
- x-ray, 76140

Contracture

- cast, finger, 29086
- release
 - elbow, 24149
 - palm, 26040-26045
 - scar, 15002-15005
 - shoulder capsule, 23020
 - thumb, 26508
 - wrist, 25085

Contrast material

- injection, 31656, 36598, 49424, 49427, 49440-49465, 51605, 58340, 62263-62264, 62310-62319, 68850
- radiologic study, 70015, 70373, 70460-70470, 70481, 70487, 70491-70498, 70542-70543, 70545-70546, 70548-70549, 70552-70553, 70558-70559, 71260-71275, 71551-71555, 72126-72127, 72129-72130, 72132-72133, 72142, 72147, 72149, 72156-72159, 72191, 72193, 72196-72198, 73201-73206, 73219-73220, 73222-73225, 73701-73706, 73719-73720, 73722-73725, 74160-74175, 74182-74185, 74190, 74290-74291, 75635, 77058-77059, 0144T-0151T

Cornea

- biopsy, 65410
- foreign body removal, 65220-65222
- laceration repair, 65275-65286
- lens prescription, 92310-92316
- lesion
 - destruction, 65450
 - excision, 65400
- puncture, 65600

Cornea — continued

- scraping, 65430
- transplant, 65710-65755

Coronary

- angiography, 92975, 93508
 - injection procedure, 93542-93543, 93545
- artery
 - bypass, 33510-33536
 - CT angiography, 0146T-0149T
 - repair, 33502-33508
- atherectomy, 92995-92996
- balloon angioplasty, 92982-92984
- chamber fistula repair, 33500-33501
- reconstruction, 33861-33864
- thrombolysis, 92975-92977
- vessel or graft ultrasound, 92978-92979

Correction

- astigmatism, 65772-65775
- bunion, 28290-28299
- claw finger, 26499
- eyelid disorder, 67820-67835, 67911-67912
- hammertoe, 28285
- intestinal malrotation, 44055
- inverted nipples, 19355
- male urinary incontinence, 53440
- osteotomy
 - metatarsal, 28306-28309, 28735
- osteotomy
 - toe, 28306-28312

Counseling

- ESRD, 90918-90920
- genetic, 96040
- preventive medicine, 99391-99397, 99411-99412
- psychiatric, 90801-90802, 99510
- tobacco cessation, 99406-99407
- performance measure, 4000F

Cranial

- application
 - halo, 20661, 20664
 - tongs, 20660
- bone
 - graft, 61316, 62140-62148
 - reconstruction, 21181-21184
- decompression, 61322-61460
- fossa surgery, 61580-61619
- lesion treatment, 77371-77372, 77432
- nerve
 - electrode implantation, 64553, 64573
- suture repair, 61550-61559

Craniectomy, 61304-61315, 61320-

- 61323, 61343, 61450-61480, 61500-61530, 61550-61552, 61558-61559, 61570-61571, 61860-61875

Craniotomy, 61304-61315, 61320-

- 61323, 61440, 61490, 61510-61516, 61526-61530, 61533-61546, 61556-61557, 61566-61567, 61570-61571, 61582-61583, 61590, 61592, 61860-61868, 62117, 62121

Craterization of bone, 23180-23184,

- 24014-24147, 25150-25151, 26230-26236, 27070-27071, 27360, 27640-27641, 28120-28124

Creation

- arteriovenous fistula, 35686, 36825-36830
- heart block, 93650
- intestinal reservoir, 44158, 44211, 45113, 45119, 45397, 45400

Creation — continued

- lesion
 - brain, 61720-61735, 61790-61791
 - spinal cord, 63600
- pericardial window, 32659, 33025
- shunt, 62190-62192, 62220-62223, 63740-63741
- vertebral cavity, 22523-22525
 - radiological supervision and interpretation, 72291-72292

Cryotherapy, 17340, 31641, 65450,

- 66720, 67101, 67107-67108, 67113, 67141, 67208, 67227, 67229, 67825

Cryosurgery, 17000-17111, 17260-

- 17286, 45190, 46916, 46924, 46937-46938, 52214-52240, 54056, 54065, 56501-56515, 57061-57065, 69801-69802

CT guidance, 77011-77014**Curettage**

- anal fissure, 46940-46942
- and dilation, 57520-57522, 57558, 58120, 59840, 59851, 59856

bone

- cyst, 21030-21040, 23140-23156, 24110-24126, 25120-25136, 26200-26215, 27355-27358, 27635-27638, 28100-28108
- tumor, 21030-21040, 23140-23156, 24110-24126, 25120-25136, 26200-26215, 27355-27358, 27635-27638, 28100-28108

- endocervical, 57454-57456, 57505
- endometrial, 58356

Cyst

- aspiration
 - bone, 20615
 - brain, 61151, 61156
 - breast, 19000-19001
 - ganglion, 20612
 - ovarian, 49322
 - spinal cord, 62268
 - thyroid, 60300
 - drainage
 - abscess, 10060-10061
 - brain, 61150
 - female genital or reproductive organ, 53060, 58800-58805
 - head, 40800-40801, 41000-41009, 41015-41018, 41800
 - pilonidal, 10080-10081
 - excision
 - brain, 61516, 61524
 - breast, 19120
 - digestive organ, 47715, 48120
 - female genital or reproductive organ, 55680, 56740, 57135, 58925
 - head, 21030, 21040, 21046-21049, 30124-30125, 42408
 - intra-abdominal, 49203-49205
 - lower extremity, 27065-27067, 27345-27347, 27355-27358, 27630-27638, 28090-28108
 - pilonidal, 11770-11772
 - thyroid, 60200
 - upper extremity, 23140-23156, 24110-24126, 25120-25136, 26160, 26200-26215
 - urinary organ, 50280-50290
 - marsupialization
 - liver, 47300
 - pancreas, 48500
 - salivary, 42409
- Cystectomy, 51550-51596**
ovarian, 58925
- Cystotomy, 51020-51065, 51520-51535**
- Cystourethroscopy, 52000-52402,**
52601, 52647-52649, 53500

Coronary Artery Bypass Venous Grafting

Coding Guidance

Ligation, division, and stripping of saphenous veins are not reported in addition to coronary artery bypass procedures 33510-33523, since the placement of a venous graft is integral to the bypass.

- 33510 Coronary artery bypass, vein only; single coronary venous graft** + ☐

RVU	Global Days			Modifiers			
Non-Fac Total	Fac Total		50	51	62	80	
53.91	53.91	090	2	0	0	2	

AMA: Fall 1991:5, Winter 1992:12, Jul 1999:11, Apr 2001:7, Feb 2005:14, Mar 2007:17
- 33511 two coronary venous grafts** ☐

RVU	Global Days			Modifiers			
Non-Fac Total	Fac Total		50	51	62	80	
58.52	58.52	090	2	0	0	2	

AMA: Fall 1991:5, Winter 1992:12, Jul 1999:11, Apr 2001:7, Feb 2005:14, Mar 2007:17
- 33512 three coronary venous grafts** ☐

RVU	Global Days			Modifiers			
Non-Fac Total	Fac Total		50	51	62	80	
65.32	65.32	090	2	0	0	2	

AMA: Fall 1991:5, Winter 1992:12, Apr 2001:7, Feb 2005:14, Mar 2007:17
- 33513 four coronary venous grafts** ☐

RVU	Global Days			Modifiers			
Non-Fac Total	Fac Total		50	51	62	80	
67.23	67.23	090	2	0	0	2	

AMA: Fall 1991:5, Winter 1992:12, Apr 2001:7, Feb 2005:14, Mar 2007:17
- 33514 five coronary venous grafts** ☐

RVU	Global Days			Modifiers			
Non-Fac Total	Fac Total		50	51	62	80	
70.45	70.45	090	2	0	0	2	

AMA: Fall 1991:5, Winter 1992:12, Apr 2001:7, Feb 2005:14, Mar 2007:17

Coding Guidance

If venous grafting alone is performed, report only one code from 33510-33516 that most comprehensively describes the procedure and no other bypass code.

- 33516 Coronary artery bypass, vein only; six or more coronary venous grafts** ☐

RVU	Global Days			Modifiers			
Non-Fac Total	Fac Total		50	51	62	80	
73.17	73.17	090	2	0	0	2	

AMA: Fall 1991:5, Winter 1992:12, Jul 1999:11, Apr 2001:7, Feb 2005:14, Mar 2007:17

Coronary Artery Bypass Arterial-Venous Grafting

Coding Guidance

Combined arterial-venous grafting codes for coronary artery bypass cannot be reported alone. The most comprehensive code from the combined grafting group of bypass codes (33517-33523) must be reported together with one code from the group 33533-33536 for arterial grafting bypass.

- 33517 Coronary artery bypass, using venous graft(s) and arterial graft(s); single vein graft (List separately in addition to code for primary procedure)** + ☐

RVU	Global Days			Modifiers			
Non-Fac Total	Fac Total		50	51	62	80	
4.96	4.96	ZZZ	2	0	0	2	

AMA: Fall 1991:5, Winter 1992:13, Nov 1999:18, Apr 2001:7, Feb 2005:14, Mar 2007:17
- 33518 two venous grafts (List separately in addition to code for primary procedure)** + ☐

RVU	Global Days			Modifiers			
Non-Fac Total	Fac Total		50	51	62	80	
10.63	10.63	ZZZ	2	0	0	2	

AMA: Fall 1991:5, Winter 1992:13, Apr 2001:7, Feb 2005:14, Mar 2007:17

- 33519 three venous grafts (List separately in addition to code for primary procedure)** + ☐

RVU	Global Days			Modifiers			
Non-Fac Total	Fac Total		50	51	62	80	
14.26	14.26	ZZZ	2	0	0	2	

AMA: Fall 1991:5, Winter 1992:13, Apr 2001:7, Feb 2005:14, Mar 2007:17
- 33521 four venous grafts (List separately in addition to code for primary procedure)** + ☐

RVU	Global Days			Modifiers			
Non-Fac Total	Fac Total		50	51	62	80	
17.38	17.38	ZZZ	2	0	0	2	

AMA: Fall 1991:5, Winter 1992:13, Apr 2001:7, Feb 2005:14, Mar 2007:17
- 33522 five venous grafts (List separately in addition to code for primary procedure)** + ☐

RVU	Global Days			Modifiers			
Non-Fac Total	Fac Total		50	51	62	80	
19.94	19.94	ZZZ	2	0	0	2	

AMA: Fall 1991:5, Winter 1992:13, Apr 2001:7, Feb 2005:14, Mar 2007:17
- 33523 six or more venous grafts (List separately in addition to code for primary procedure)** + ☐

RVU	Global Days			Modifiers			
Non-Fac Total	Fac Total		50	51	62	80	
22.87	22.87	ZZZ	2	0	0	2	

AMA: Fall 1991:5, Winter 1992:13, Apr 2001:7, Feb 2005:14, Mar 2007:17
- 33530 Reoperation, coronary artery bypass procedure or valve procedure, more than one month after original operation (List separately in addition to code for primary procedure)** + ☐

RVU	Global Days			Modifiers			
Non-Fac Total	Fac Total		50	51	62	80	
13.44	13.44	ZZZ	0	0	0	2	

AMA: Winter 1990:6, Fall 1991:5, Winter 1992:13, Apr 2001:7, Jul 2001:11, Feb 2005:13-14

Coronary Artery Bypass Arterial Grafting

Coding Guidance

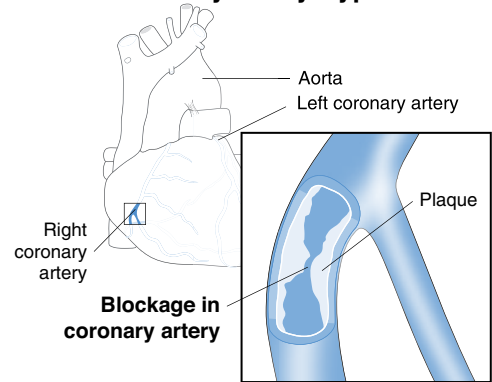
When coronary artery bypass is performed using arterial grafts alone, only the most comprehensive code from the arterial grafting group of bypass codes may be reported.

- 33533 Coronary artery bypass, using arterial graft(s); single arterial graft** ☐

RVU	Global Days			Modifiers			
Non-Fac Total	Fac Total		50	51	62	80	
52.72	52.72	090	2	0	0	2	

AMA: Winter 1992:12, Nov 1999:18, Apr 2001:7, Feb 2005:14, Mar 2007:17

Coronary Artery Bypass



- 33534 two coronary arterial grafts** ☐

RVU	Global Days			Modifiers			
Non-Fac Total	Fac Total		50	51	62	80	
60.71	60.71	090	2	0	0	2	

AMA: Winter 1992:12, Apr 2001:7, Feb 2005:14, Mar 2007:17

33534

33535	three coronary arterial grafts ☑
RVU	Global Days Modifiers
Non-Fac Total Fac Total	50 51 62 80
66.89 66.89	090 2 0 0 2
AMA: Winter 1992:12, Apr 2001:7, Feb 2005:14, Mar 2007:17	
33536	four or more coronary arterial grafts ☑
RVU	Global Days Modifiers
Non-Fac Total Fac Total	50 51 62 80
71.58 71.58	090 2 0 0 2
AMA: Winter 1992:12, Apr 2001:7, Feb 2005:14, Mar 2007:17	
33542	Myocardial resection (eg, ventricular aneurysmectomy) ☑
RVU	Global Days Modifiers
Non-Fac Total Fac Total	50 51 62 80
67.41 67.41	090 2 0 1 2
33545	Repair of postinfarction ventricular septal defect, with or without myocardial resection ☑
RVU	Global Days Modifiers
Non-Fac Total Fac Total	50 51 62 80
80.04 80.04	090 2 0 1 2
33548	Surgical ventricular restoration procedure, includes prosthetic patch, when performed (eg, ventricular remodeling, SVR, SAVER, Dor procedures) ☑
RVU	Global Days Modifiers
Non-Fac Total Fac Total	50 51 62 80
78.82 78.82	090 2 0 1 2
AMA: Mar 2007:17	

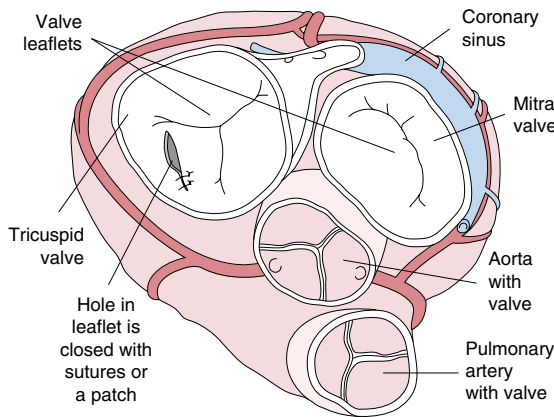
Coronary Endarterectomy Procedures

33572	Coronary endarterectomy, open, any method, of left anterior descending, circumflex, or right coronary artery performed in conjunction with coronary artery bypass graft procedure, each vessel (List separately in addition to primary procedure) + ☑
RVU	Global Days Modifiers
Non-Fac Total Fac Total	50 51 62 80
6.47 6.47	ZZZ 0 0 0 2

Ventricle/Complex Cardiac Anomaly Procedures

33600	Closure of atrioventricular valve (mitral or tricuspid) by suture or patch ☑
RVU	Global Days Modifiers
Non-Fac Total Fac Total	50 51 62 80
46.91 46.91	090 2 0 1 2
AMA: Mar 2007:17	

Closure of atrioventricular valve



33602	Closure of semilunar valve (aortic or pulmonary) by suture or patch ☑
RVU	Global Days Modifiers
Non-Fac Total Fac Total	50 51 62 80
44.81 44.81	090 2 0 1 2

33606	Anastomosis of pulmonary artery to aorta (Damus-Kaye-Stansel procedure) ☑
RVU	Global Days Modifiers
Non-Fac Total Fac Total	50 51 62 80
48.58 48.58	090 2 0 1 2
33608	Repair of complex cardiac anomaly other than pulmonary atresia with ventricular septal defect by construction or replacement of conduit from right or left ventricle to pulmonary artery ☑
RVU	Global Days Modifiers
Non-Fac Total Fac Total	50 51 62 80
49.95 49.95	090 2 0 1 2
33610	Repair of complex cardiac anomalies (eg, single ventricle with subaortic obstruction) by surgical enlargement of ventricular septal defect
RVU	Global Days Modifiers
Non-Fac Total Fac Total	50 51 62 80
49.38 49.38	090 2 0 1 2
33611	Repair of double outlet right ventricle with intraventricular tunnel repair;
RVU	Global Days Modifiers
Non-Fac Total Fac Total	50 51 62 80
53.12 53.12	090 2 0 1 2
33612	with repair of right ventricular outflow tract obstruction
RVU	Global Days Modifiers
Non-Fac Total Fac Total	50 51 62 80
56.53 56.53	090 2 0 1 2
33615	Repair of complex cardiac anomalies (eg, tricuspid atresia) by closure of atrial septal defect and anastomosis of atria or vena cava to pulmonary artery (simple Fontan procedure)
RVU	Global Days Modifiers
Non-Fac Total Fac Total	50 51 62 80
53.56 53.56	090 2 0 1 2
33617	Repair of complex cardiac anomalies (eg, single ventricle) by modified Fontan procedure
RVU	Global Days Modifiers
Non-Fac Total Fac Total	50 51 62 80
59.60 59.60	090 2 0 1 2
33619	Repair of single ventricle with aortic outflow obstruction and aortic arch hypoplasia (hypoplastic left heart syndrome) (eg, Norwood procedure)
RVU	Global Days Modifiers
Non-Fac Total Fac Total	50 51 62 80
74.46 74.46	090 2 0 1 2

Septal Defect Procedures

33641	Repair atrial septal defect, secundum, with cardiopulmonary bypass, with or without patch
RVU	Global Days Modifiers
Non-Fac Total Fac Total	50 51 62 80
42.97 42.97	090 2 0 1 2
33645	Direct or patch closure, sinus venosus, with or without anomalous pulmonary venous drainage
RVU	Global Days Modifiers
Non-Fac Total Fac Total	50 51 62 80
43.00 43.00	090 2 0 1 2
33647	Repair of atrial septal defect and ventricular septal defect, with direct or patch closure
RVU	Global Days Modifiers
Non-Fac Total Fac Total	50 51 62 80
45.94 45.94	090 2 0 1 2
33660	Repair of incomplete or partial atrioventricular canal (ostium primum atrial septal defect), with or without atrioventricular valve repair
RVU	Global Days Modifiers
Non-Fac Total Fac Total	50 51 62 80
48.90 48.90	090 2 0 1 2